

Welcome to the latest round up of Shed related items from the Executive, and around the country.

Shed News Region 1

You can see who played their part during the Blue September Prostate Cancer Awareness month – well done Boomer Business



(What the Xmas decorations are up already! Editor)

Whakatane Menz Shed

The Menz Shed and Quota joined forces at Bunnings and had a very successful day – the Menz Shed cooking sausages, selling muffins, and our “Toys for Big Boys” raffle.

Nett amount raised for Blue September
\$744-20.

Thanks to the Menz Shed guys for their help and keeping the Quota girls company who were selling the Raffle tickets.



Te Puke Community Menzshed

Recently, Andrea McNeil, from Bunnings Te Puke paid us a visit and brought us a gift, an OZITO electric stapler.

Way cool. In return Kevin Lowndes presented Andrea with one of his hand-made pens.

Andrea then joined with us for morning tea.

Andrea with the guys showing the pen Kevin made and the OZITO Stapler. Nice beanies guys.



Some people we were doing a job for mentioned that they had a stack of Totara fence battens and some old logs that they thought may be Kauri. They asked if I thought the Menzshed would like the timber.



Naturally I said yes, so I loaded up my van and headed home with all of the wood on board. After running one of the battens through the saw a couple of times Hedley turned up a Honey Dipper.

A few wooden utensils and chopping boards are in the plan to be given back to the couple that donated the

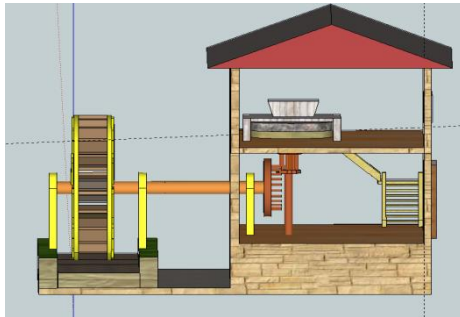
wood. And there is more where this lot came from... woohoo



KAWERAU MENZSHED

During the cold months, Kawerau Menzshed have little outside work to do and the dozen old farts were just been sitting around drinking coffee and putting the world to right. This changed when some bright spark, or is that a dimly lit spark, suggested we build a project for the National Woodskills Competition held in Kawerau at the end of September each year. Another bright spark came up with the idea of building a model waterwheel.

Having heaps of second hand Radiata and the competition having a Radiata category it was a no brainier into which category we would enter. Plans were drawn up and the waterwheel mysteriously became 18th century Flour Mill run by a waterwheel.



During the build there were many challenges to overcome.

How to create a stone-look finish, setout for the lantern gear, getting the shafts to run smoothly, etc,etc. Work started with one member turning the shaft and one creating the wheel supports and the parts for the wheel. These were done on a members home made CNC router as were the stone-look walls.

Initial Sketch

The project soon took over all other things for a couple of the members and as the parts were made the others joined in with the sanding, making the base, building the roof and the water trough.

One idea from the start was the get the waterwheel turning with the use of a small water pump. In order to protect the timber from the water the wheel and the trough were coated with fibreglass resin, unfortunately this was done after all the parts were nailed and glued together, not an easy job for one member. The sanding afterwards was very time consuming and took many hours. As it turned out the small pump was too small.

Plan B was to use a small 12V motor running a series of CNC cut gears. The first motor was way too small but some success was achieved with a bigger motor. We could get the wheel to turn but when the lantern gear was connected it ground to a halt. Eventually the whole idea of getting it running was shelved for the competition.

Finally with a few added features the project was entered, we didn't come in the top 3 but did received a highly commended ribbon.



Kawerau Menzshed encourages all other Menzsheds to enter the competition next year. If enough sheds entered we could possibly get our own category.

Check out the National Woodskills *Facebook* page for other great projects.

Shed News Region 3



The warmer weather has brought the blokes out for a special photo shoot. But look what they are doing inside, these two items were cut-out by our expert wood scroll saw man - Graeme Black from Menzshed Napier.

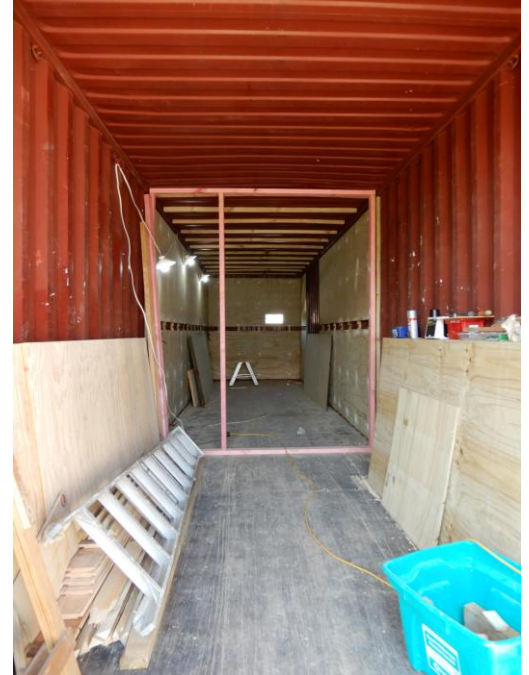


In operation since 2012 the Mens Shed in Dannevirke has been very active undertaking many community projects and remedial work for local individuals. Initially working from a one bay workshop and a separate building for smoko, it is pleasing to see a progressive expansion to now 3 bays, the original bay now suited to be the main woodworking machinery shop, another bay as the woodwork assembly and painting shop, while the third bay is dedicated to mechanical repairs, such as older cars, tractors, small engine machinery and bicycles.

Open two day each week the 30+ members come and go as they please helping where they can, and as they are able, each photo tells a story;



Martinborough Mens Shed did not take long to outgrow the space in the historical Courthouse which they along with Community and Council support have restored the courthouse to its former glory, and will be used for more of the quieter shed activities. So to the future and good progress is being made on the new workshop complex.



The shed's makeover at the start of this year must have boosted productivity, as a number of projects have been completed leaving the project list looking a bit thin.

Some of the finished projects include a child's activity centre with a distinctly practical feel and probably the most elegant bird feeder in the Southern hemisphere.

In work are display cabinets for the Heritage Museum and personal projects as diverse as our membership.

We also had the mini-fell guys pop in from next door to cut up new sleepers for the track at the race course.



MENZSHED HAWERA

South Taranaki's first Mens Shed proposed

A meeting on 12th October in the Hawera Club attracted thirty members of the public, interested in establishing a Mens Shed in the town.

Welcomed by Geoff Coubrough who, along with Peter Gulliver, has been exploring the possibilities of creating a shed in Hawera. After a period of researching the concept and visiting the Whanganui and New Plymouth sheds they had concluded the time was right to convene a meeting of interested parties to try and get a shed up and running.

Mr Coubrough, then introduced Murray Campbell, a member of the Henley Mens Shed in Masterton, to explain the background of the movement and how Mens Sheds operated.

Mr Campbell opened his address by showing the national promotional video, filmed in his shed, promoting the benefits such a shed generated to not only its members, but the wider community.

He then went on to explain how, in the mid nineties in rural Australia it was realised that men over the age of 65 were committing suicide at an alarming rate. Research showed that these men, following retirement, became isolated, lonely, depressed and ultimately suicidal. They had a mental health problem. The idea was born that if a building with tools in it was made available, men came, and by working together, created new friendships, passed on and learned new skills and generally enjoyed the camaraderie which improved their health and well being.

Since then the phenomenon has spread worldwide with around 130 sheds operating in New Zealand. Murray described some of the challenges which presented themselves each day, from broken chairs to kindergartens requiring toys and equipment to be made or repaired and requests from individuals and organisations for assistance. Mens sheds are busy places.

The meeting finally elected a steering committee, headed by Geoff Coubrough, to form a Mens shed and seek a suitable building to base it in.

Shed News Region 4

MEN'S SHED LINCOLN

In December 2013 a proposal to establish a Men's Shed in Lincoln was passed at the Lincoln Rotary Clubs Meeting, following an offer from Gerard McCarthy of wood working tools and machinery.

The ensuing years saw many meetings, negotiations and with much hard work, we now have an established 200 m² wide span shed. The Shed is on Meijer Drive in Lincoln, near the Lincoln Event Centre and the Lincoln Rugby Club Rooms. The Shed is presently open on Monday and Tuesday afternoons, 1.00 pm to 4.00 pm. As our membership increases, we plan to increase the days and times of opening.

The wide span Shed was completed in early 2017, and before we moved our donated tools and machinery in, the concrete floor was painted, electricity was connected with lighting electrical points around the walls and flexible points overhead. Internal walls have been lined with painted ply, and shelving has been attached.



Founding Chairman John Doocey, a retired builder has led the development and planned the Shed layout, which is working extremely well.

While we thought a 200 m² clear floor Shed would be plenty big enough we are now well into Stage 2 to add another 200 m² clear floor Shed alongside our existing building with an annexe between. As well as additional workshop area, it is proposed to have a Meeting Room / Tea Room, and toilets.

Men's Shed Lincoln, have been well support with grants from The Pub Charity Ltd, The Rata Foundation, Lincoln Community Trust. Selwyn

District Council have leased us the site and have assisted with access to services. In addition, the Ellesmere Lions Club has generously supported our fund raising and with member contacts we have undertaken projects to assist our local community.

On Monday 26 November 2018, Gerard McCarthy was present with the first Life Membership of Men's Shed Lincoln, at the Shed with sons Peter and Andrew and a grandson present.



Shed News Region 5

Taieri Bloke's Shed

This wall saw is ideal for sheds that don't have a big table saw or limited space.

A Taieri shed member, Clive Donaldson had heard about wall saws but didn't know where to start. Searching the internet he found many different plans in a American magazine which got him thinking.

The shed needed one that fitted on the wall, saving floor space, after sifting through many designs and sizes, he picked on one but had to change a few things.

You slide the full sheet of ply or MDF onto the frame. The saw will cut horizontal and vertical anywhere along the sheet.

The saw has a weight to counterbalance the saw.

The saw is only a handheld saw helping to keep the cost down.

We bring the full sheets through the sliding door onto the saw, cut to the sizes required before moving onto the other equipment. You are not carrying full sheets through the work area.

The photo giving you the idea, but if you would like to know more, please contact Clive Donaldson on 0226784500



Shed News Region 6

We are sure you are doing some amazing stuff at the top of the south, so please send us some news for the next newsletter – support@menzshed.nz

A Question of Mens Health

As part of our men's shed commitment to men's health, there are a number of resources available on our website. Click [this link](#) to view. If there are other resources that you think could be included, please contact secretary@menzshed.nz

Menzshed New Zealand Conference – DUNEDIN 17~ 19 April 2020

This is the 3 days programme for the 2020 National Menzshed Conference

Held at St Hilda College boarding house, 12 Tolcarne Street, Dunedin

FRIDAY 17TH APRIL

10.00 Onwards Registrations at Tolcarne
 12.15 to 1.15 Lunch
 1.15 Health and Safety on site
 1.30 Welcome, Trevor Scott NZ Chairman
 1.40 Mayor Welcome
 1.50 Guest Speaker Hon David Clarke
 2.25 Professor Debra Waters
 3.00 to 3.30 Afternoon tea
 3.30 to 3.40 Buses leave for Otago Polytechnic
 4.00 Varies tours of interest round the Polytechnic
 5.30 Drinks and plenty of nibbles
 7.00 to 7.30 Buses return to St Hilda College
 Sheddies may go to town, or a tour of the
 Taieri Blokes Shed for those leaving early.
 During this time at the polytechnic, some special projects
 will be on display.

SATURDAY 18TH APRIL

8.00 to 9.00 Breakfast
 9.00 Security for sheds NZ Police
 9.20 Work Safe
 9.40 Tool maker
 10.00.to 10.30 Morning Tea
 10.30 Sheds catering with special people
 10.50 Mens Health Issues
 11.10 Finance and Charities Options
 11.30 Dust Filtering Options
 11.50 Australian Representative
 12.05 Panal Interviews and Questions
 12.30 to 1.30 Lunch
 1.30 Special projects that sheds have achieved
 and want to present to the conference
 2.25 Technology in Projects
 2.45 Mens Sheds moving forward
 3.05 Advancing to the Digital Age
 3.25 Group Photo, weather permitting
 3.30 Afternoon Tea
 4.00 Sponsors Hour, National and Local
 in main dinning room
 5.00 Happy Hour
 6.00 Freshen up
 6.30 Sponsors Dinner with our Guest Speaker, Jim Hopkins
 Could be some slight changes to programme pending

SUNDAY, 19TH APRIL

8.00 TO 9.00	Breakfast
9.00	Vacate Rooms
9.15	NZ Menzshed Annual General Meeting
10.15 to 10.45	Morning Tea
10.45	Menzshed NZ Question and Answer Time
11.45	Close

LADIES TIME

Friday	Open to ladies to partake all afternoon
Saturday	1.30 onwards, Tour to various places round Dunedin in mini buses
Sunday	Round 9.30 Something special with morning tea included

Sunday afternoon round 1.30 if enough interest, the Taieri Blokes Shed and North Dunedin Shed will open their doors for visiting sheddies to look through.

By now you will have read the full conference programme being held in Dunedin next year, now here is a little more information to wet your whistle and travel to the Scottish city of the south.

Firstly, for the ladies, we have arranged a interesting programme for you, and it includes some shopping time on Saturday morning. Ladies Programme included in programme

Make a break and see some of our sights while down here, it cost not much more. For both of you to enjoy, they are, the Taieri Gorge Train trip, round 3 hours, Albatross Colony, Railway Station, Harbour Cruise, and much more.

If you are a outdoor person, the Otago Rail Trail will be at its best for Autumn Colours as will all Central Otago. They have to be seen to be appreciated.

We hear, if you can arrange 10 or more to fly south, approach your travel agent and ask for a conference discount. The south has a lot to offer and see, so come and enjoy

=====

Ian Miller Conference Committee
Regional Representative - Otago, Southland
MENZSHED NZ
Tel 027 485 1452
Email - conference@menzshed.nz

In the news again

1 October was the International Day of Older Persons. To mark the day in Palmerston North, Age Friendly Palmerston North this year offered an award for various categories of older person, to recognise their contribution to the community. The awards are given to individuals and groups who have carried out outstanding and innovative service to others in the community.

Menzshed Manawatu were nominated for the Business or Organisation of the year, alongside two other organisations, and were successful - being awarded the Senior Citizen's cup, sponsored by Property Brokers for, 2019.

The judges noted that Menzshed Manawatu received the Organisation of the Year award for providing older men with a place to meet and make things, helping them stay healthy, active and socially connected.

What also probably helped was the long list of voluntary organizations that Menzshed have helped through their endeavours.

Groups such as the Stroke Foundation, who were the recipients of a Menzshed playhouse to raffle, and the Multicultural Society who needed a mobile noticeboard, and Community House who received 2 new picnic tables..... The list goes on.

The photo shows Menzshed Manawatu Chairman, David Chapple (second from left) with the cup and Trophy.



And again

October 2019

SuperSeniors

Menz Shed

At the Kapiti Menz Shed, they start each meeting with a cup of tea and a biscuit.

Chairman Doug Watson said an important part of the group was being able to talk to other men.

"There's very few groups out there for men, especially older men," he said.

"We grew up going to work from 7am to 6pm and then coming home. You go from having an occupation to nothing.

"This is a place where we can come together and talk about anything we like."

The group has more than 100 members and the shed is a hive of activity during the sessions.

People come from all walks of life - the youngest member is in his teens and the oldest in his 90s.

Mr Watson said giving back to the community was a major part of their work.

In the past they have renovated toys for playgroups, built benches for local parks and nest boxes for wildlife.

"Anyone who needs help, we'll give it," he said.

The group is one of more than 100 sheds across New Zealand.

MenzShed NZ Chairman Trevor Scott said you don't need to have practical skills to get involved.

"The sheds are a place where you are welcome to have a game of cards or just to have a chat," he said.

"In fact often there is more chatting than work done."

For your local Menz Shed go to www.menzshed.org.nz



It matters to some!

WHICH IS THE OLDEST SHED IN THE SOUTH ISLAND?

Looking through our history information on the shed movement in New Zealand there is gaps on which was the first shed to open in the South Island.

It appears that the Hamilton shed was the first to get established in New Zealand following a visit to Australia by Neil Bruce.

It shows that Hamilton, Picton and Dunedin sheds were formed and opened between 2007-09, or is their one in Canterbury?

Regarding the Dunedin area sheds, Commander Phil Bradshaw of the Royal Navy brought the idea while serving his stint in Dunedin from Australia.

During the latter half of 2007 he called public meetings to gauge the interest to start a men's shed movement in and round Dunedin.

During subsequent meetings he consulted with various groups and the outcome was to form a steering committee to follow this further. Later that year a public meeting was called with individuals expressing interest. Also the steering committee started to look around for suitable premises. The Otago Aero Club generously approved of a lean to shed. This was a good start, and on the 15th March 2008, a working bee was held to clean out the room to get ready for painting.

On the 12th July 2008 the Taieri Blokes Shed was officially opened by Commodore Bruce Pepperell, Deputy Chief of Navy with round 60 plus attending.

The question is, "Can your shed prove that your official opening of your shed was before this," This way we hope to find out who is the oldest shed in the South Island. We are not claiming to be the first but very interested to find out.

=====

Ian Miller
Regional Representative - Otago, Southland
MENZSHED NZ
Tel 027 485 1452

National/Regional

Wanted: Four Regional Representatives

MENZSHED NZ relies on reps nominated by member sheds to support new initiatives and established sheds and to represent their interests at a national level.

Regions with vacancies are Northland/Auckland,
Taranaki/Manawatu/Wanganui/Hawkes Bay/Wellington
Tasman/Nelson/ Marlborough
and Canterbury/Westland.

We are not expecting reps to be road warriors, the majority of support can be conducted by phone and email. MENZSHED NZ committee meetings are conducted on-line and don't require the latest computer. RRs also do not need to be a shed chairman or a committee officer - just an enthusiasm for the movement and knowledge of shed operations.

Interested in learning more? Please contact John Bush
support@menzshed.nz.



CONTACT INFORMATION AND WEBPAGES

Attention shed secretary, coordinator or chairman.....

Have we got your contact information correct on your webpage hosted at www.menzshed.nz? Please take a moment to check. Updates - please advise secretary@menzshed.nz

Also check that you have up-to-date contact information recorded at the Societies office and at Charities Services, as applicable.



SEA
CONTAINERS[®]

SHIPPING CONTAINERS FOR SALE
NEW & USED GRADES

MENZSHED NZ

SHIPPING CONTAINER OFFER

0508 732-266 / sales@seacontainers.co.nz

SEA Containers NZ specialises in shipping container sales, hire, relocations and modifications throughout New Zealand. We offer an extensive range of new and used shipping containers ranging from 8ft and 10ft containers up to 20ft and 40ft in size.

We actively want to support your “shed” and help you get your projects off the ground, in order to help the community. For this reason, we can offer 20’ containers at discounted rates ex our main container depots – Auckland, Tauranga, Christchurch and Dunedin for the prices below:

- **A Grade @ \$3,900+GST**
- **B Grade @ \$2,650+GST**
- **C Grade @ \$2,450+GST**
- ** these prices are excluding any relocation costs to the regions, or local delivery costs. Subject to availability at time of order
- ** If you require other container sizes other than 20’ units, then please speak to our friendly team and discuss your requirements
- ** Just mention Menzshed when talking to our team on the contact details above
- ** Valid until 31st December 2019

We do have 35 depots nationwide, so we are positive we can help your “shed” project with a dry and secure shipping container to help develop that community space to share your skills, knowledge and most importantly to have a laugh




To make things simple we grade our containers in 3 ways

Our A Grade units have had one trip from China (carrying cargo) into one of the major NZ ports, whilst our B and C grade units are guaranteed 100% wind and water tight. These units are surveyed and inspected prior to leaving our container depot.

A

GRADE
"One-trip / near new condition"


- Container comes straight from manufacturer, but has had one trip from China carrying cargo
- Generally have vents in side walls
- Built with marine plywood floors
- Generally fitted with lock box on doors for added security
- Can have wear and tear marks from single trip to NZ including scratches and minor scuffs/dents
- Can be pre-ordered in a range of basic colours



B

GRADE
"Second hand units"


- Best of second hand range with a better overall condition
- Minor dents, dings, surface rust and may have had previous repairs
- 100% wind and water tight. Guaranteed by SEA Containers NZ
- Can be exported once updated with a valid CSC plate
- Container previously used for shipping goods worldwide
- Suitable for storing household goods



C

GRADE
"As-is quality"

- Containers are in 'as-is' condition, and generally have had previous repairs however are wind and water tight
- Walls have their share of dents and dings with external surface rust
- Suitable for storing machinery and uses around the farm
- Ideal to use for acoustic barriers, billboards and structural supports



CONTAINER SPECIFICATIONS

** Indicative measurements only	Internal Length	Internal Width	Internal Height	External Length	External Width	External Height	Door Height	Door Width	Tare Weight	Cubic Capacity	Max Cargo Weight
20' Gen Purpose	5.9m	2.35m	2.39m	6.06m	2.44m	2.6m	2.28m	2.34m	2,000kg	33.2 m3	30,480kg
20' High Cube	5.9m	2.35m	2.7m	6.06m	2.44m	2.9m	2.58m	2.34m	2,100kg	37.4 m3	30,480kg
40' Gen Purpose	12.03m	2.35m	2.39m	12.19m	2.44m	2.6m	2.28m	2.34m	3,470kg	67.7 m3	30,480kg
40' High Cube	12.03m	2.35m	2.7m	12.19m	2.44m	2.9m	2.58m	2.34m	3,660kg	76.2 m3	30,480kg



SEA Containers NZ
PO Box 4271,
MOUNT MAUNGANUI 3149

0508 SEACON (732266)
sales@seacontainers.co.nz
www.seacontainers.co.nz

As a matter of interest?

Mens Sheds are constantly being offered financial recognition in return for the good deeds and services they provide, most has come in the form of cash or cheques (these are being phased out) or through internet banking, but what about the most common way of making financial transactions nowadays in everyday life - Electronic Funds Transfer at Point Of Sale = EFTPOS.

How many sheds have already moved into doing transactions this way?
Which provider is offering the best deal to charities to operate EFTPOS?

We would be interested to know, so take a minute and send an email to support@menzshed.nz

