

**Welcome to the latest round up of Shed related items from the Executive, and around the country.**

### *National News*

Well the global pandemic has thrown a spanner in the machine, and for us the Conference in Dunedin has been postponed.

But on a revised date the AGM will proceed, make sure you are online for that Monday 18<sup>th</sup> May 2020 commencing at 7.30pm

---

From your Chairman.

Hi, With the unforeseen closures of our sheds nationally it is a time to reflect on our ethos of "men's health and wellbeing". Each shed I am sure is trying something different to keep the isolation of its members to a minimum.

This may well be a time to look towards establishing a ringing tree, exploring the technologies available like "zoom" or a similar product. Even just a short note the old-fashioned way of post may make another blokes day and help them realise they have not been forgotten. We all have ways of reaching out to our fellow sheddies.

Activities are one way of keeping in touch. This may be by just creating a topic and sending the theme to the shed members. They construct a solution, take a picture and send it onto one person to collate and share with fellow members. Each week a new theme. The creations may be constructed using any materials found at home. This brings out the creative spirit in each of us. You may think this is kids' stuff. Well it ain't, we are just around the corner of a second childhood!! We are all just big kids at heart. If you have other ideas please share them with us.

Once this is over we can all look back and chat about what we did to keep us going.

Take care, link up with a fellow member, make their day and stay safe. Trevor Scott

---

## Settlers Albany Blokes Shed

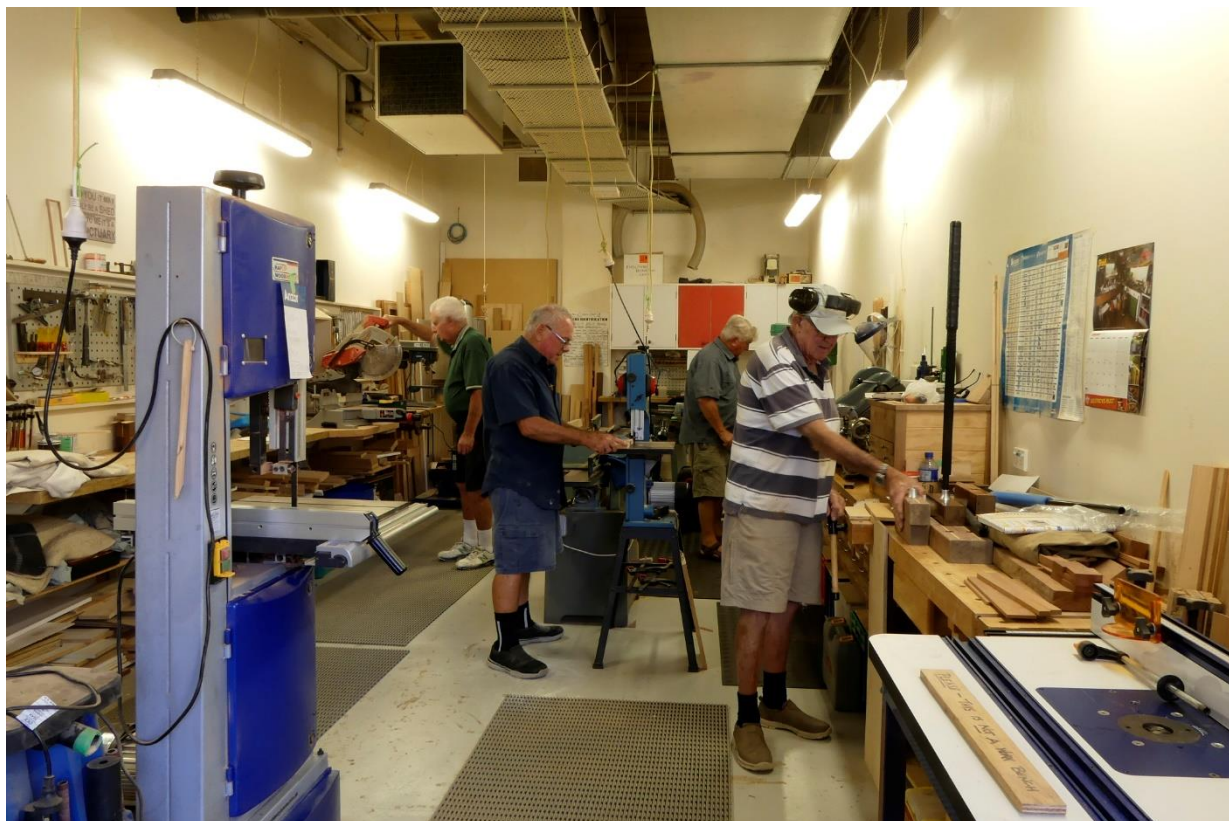
At Settlers, we have a “Blokes Shed”, where like all “Men's Sheds”, is a communal area where member residents of our Life Style Village can come to make, repair things or just join the group for a cuppa and a chat. We enjoy a regular group “shed day” each Tuesday from 10.00 am.

The team at Settlers Blokes Shed undertake to repair and make things for the Albany Community Pre-school Centre across the road from our workshop and we have built up a great relationship with the children and the teachers alike.

We also willingly undertake many small repairs and tasks for our not so able fellow residents. These activities are mainly associated with items of woodwork and light engineering.

Items that have been made in our shed recently consist of wood turned items such as bowls; carved wooden items and yes, we have a resident woodcarver who loves carving a whole range of objects and figurines; jewellery boxes; intricate and small turned metal components, especially, for model boats.

The photo shows a few of our regular members all busy with their own projects.



.....

The men at **Auckland Central** are pretty happy with their latest acquisitions: Hammer brand planer / thicknesser and table saw in as new / unused condition generously donated by a member of the public (apparently, he brought them with him from the USA expecting to use them to build a house and then plans changed and he got one ready-made; a house that is...).

After a bit of research by Ken the shed has invested in a metal detector from Carbatec to protect their blades and it has already paid for itself several times over.

But wait, there's more – in the true spirit of repurposing and upcycling they have used the crate that the equipment was delivered in to make a tiny house which will provide some entertainment for the local children (photo shows Don Hook, Ken Buckley and Patrick Harris). Well done Auckland Central!



---

## Shed News Region 2

Send us some news for the next newsletter

---

## Shed News Region 3

The lockdown came into effect on Thursday 26<sup>th</sup> March and as with all Mens Sheds, Masterton's Henley Mens Shed was closed, but only until the 30<sup>th</sup> March when it reopened with a new purpose – still focussed on Health and Wellbeing, it became one of the communities Vaccination Stations staffed by the Masterton Medical Centre staff.

First to be jabbed were 50 of the Shedders, followed by groups of school teachers and staff from local businesses.

Good on you, living true to its motto – In the Community, For the Community

---



## MENZSHED Hawera

Hey shedders, here's a welcome to one of the newbies on the Menzshed block. This is Hawera Shed, in South Taranaki which opened officially on February 1st. Incidentally, Hawera, is also home to one of the biggest milk processing plants in the country.

Led by enthusiasts Geoff Coubrough, Chairman, and Coordinator Peter Gulliver, how many shed bosses do you know who cruise round their neighborhood in trucks like this? Great advertising eh!!



The shed itself can be found in the Hawera A & P Showgrounds. Approximately 120 square metres of the Trades Hall building is leased from the owners, and as the picture shows it's pretty impressive.



Of course, an enterprise like this requires some equipment, tools and other materials to operate.

Already, they have assembled quite a collection of bits and pieces from public donations and Phil Read and others are sorting them into some semblance of order. So good luck, and once this nasty bug is behind us, they'll be into doing what shedders do best.



## Wairoa Menzshed

Here are some pics of our Wairoa Menzshed band who practice every Friday pm and have a great time of it. No smoking /no alcohol. Currently our shed is being used as a dry goods food store operated by our local Tai Whenua in conjunction with our civil defence org.

Cheers Larry Grooby Secretary/Treasurer



## Shed News Region 4

**Mclver's Oxford Community Men's Shed.** Our shed has been reasonably busy over the last few months, with a number of community projects on the go as well as a good number of member projects, and a few new items we are going to try at our next market stall. We made 6 picnic tables and seats for the council last year and was approached recently by the trust that administers a local cemetery to see if we could build them two as well. This we undertook with pleasure. The frames are hot dipped galv steel and topped with 150x50 treated pine with three coats of Cabot's natural deck oil. At the same time a couple of other



members were renovating a garden seat that had seen better days for our local hospital grounds, it should see them through another 10 or more years. We also made 32 poppies from treated ply, these are 500 round and will be mounted on 75x50 posts and placed on fence posts at each end of town for Anzac Day each



year. The shed members undercoated and painted them red, then they were given to the local school to paint the detailing highlights on them.



A local resident spent some time on the net trying to find where she could buy two crosses her family could use to mark the graves of their parents to no avail. A call to me and an emailed picture of what she wanted ended her worries and the crosses now neatly mark the graves, all finished in a gloss white with black lettering for the names and dates.

We have been some simple flat trays and coasters out of some lovely beech timber we had donated recently, part of a tree that was cut and milled a few years ago, these are a nice yellow/white colour with a lovely darker grain showing through, these we will sell our next market day. We have been getting good numbers of members at each session this year.

---

## PEGASUS WOODEND MENZSHED

We are not a yet a fully functioning shed but this is our story so far -

Little more than six months ago our shed was just the dream of three men who saw an opportunity to play a part in helping others in the local community. An advert to see if there was anyone else interested resulted in twelve more members even though we had no home and few tools.

After a lot of hard work, Community Trust status was achieved and shortly after we became a Charitable Trust, which has enabled us to seek funding for a building. Waimakariri Council is fully behind our efforts to succeed and have generously allocated some land at the local park for our use when we are ready.

Our funding application is now progressing.

Members of other sheds we've visited in the region have given us a lot of information, good advice and encouragement to help us through the initial start-up period.

We've been very lucky to be offered the use of a classroom at the old Waikuku school as a temporary base to begin small projects and store our growing stock of tools and equipment, most of which have been generously donated. We carried out some minor repairs and were just about to move in when the Coronavirus struck. No

doubt this is just a temporary setback and we'll be up and running shortly.

Progress will be posted on our Facebook page - Pegasus/Woodend Menzshed.

John Burns.



A reminder to Facebookers that we have a shedder group called the **MENZSHED NZ shed forum** at <https://www.facebook.com/groups/917022518450093>

Presently 47 sheds are represented by 89 shedders.

To participate, visit the site and answer the two screening questions. After your application is accepted, you will be able to read and post to the site

## Bishopdale Menzshed joining with Beautiful Bishopdale Group

Creating a Village Green The demolition and replacement of the Bishopdale Library and Community Centre left a neglected site adjacent to the Bishopdale Mall. This eye-sore made the whole Mall look desolate and was a subject of Bishopdale Centre Association, Christchurch City Council and community concern In conjunction with the Bishopdale Community Trust some of the original “famous Five” that established our shed formed an Enliven Bishopdale Group to improve the site and the Mall public areas. “Ownership” of the site was eventually placed within the Parks Unit of the Christchurch City Council. The local Community Board subsequently set aside some funding so a community driven initiative could proceed. A group from our Shed along with Rotary and Tennis Clubs concreted a dirt path that people had formed between the new Library and Mall. The materials were provided by Mitre 10, Fells Concrete Colour and Allied Concrete. Six flowering trees and a drinking fountain were added by the Parks Unit.



A Mural by street artist Jake Clark and Art Panels by local Isleworth, Emanuel, Cotswold and Papanui High Schools have enlivened a blank wall of the adjacent building.



Two octagonal tables and seats made by the Menzshed have been installed. They became a popular meeting and lunch place for our community. Shed members have also made two Jack & Jill (Bill?) seats. Three further seats and a box-seat containing draught/ chess



pieces will be installed on site following the laying of concrete slab bases and a tile draught/chess board.



Our Bishopdale Menzshed is looking forward to adding these finishing touches in conjunction with other community members to what is already a popular meeting place. This will only occur when the Covid 19 virus risk is significantly reduced.

Bill Greenwood 6/4/2020

## Rolleston Men's Shed

The Shed keeps busy with a wide range of projects. Over the past few years we have continued to expand our workshops. The latest extension has been to the engineering section, nearly doubling its size. Fit out of this extension is currently in progress while our engineers continue to work on jobs for members and the community.

The woodwork section always has at least two and often three wood lathes working each session. Before Xmas they were turning bowls for the Cancer Society to put food on to give away to patients. Add to this member's projects and other projects such as wooden poppies for the RSA, items for sale at fairs, means their tools and machinery are always being used.

The electronics section, besides electrical repairs of Shed and member's items, involves computers as well. Donated computers come without software which is the way they are wanted and there are now four set up with 30" screens. The computers are used from looking at aircraft videos, to finding plans, to where to buy those odd screws needed for some project and as a source of ideas for our engineer who

is building twenty-three, two-metres-high pipe sculptures that will be erected around Rolleston.

~~~~~ Sandy Ferguson

Pictures -

Strength testing a Sculpture made for Rolleston town

Ralph shows his finished electric guitar

Bowls for the Cancer Society

Shed extension under construction



## Maths problem for a rainy isolation day.

Ignoring personalised plates, how many combinations are possible in the range AAA000 to ZZZ999?

Answer elsewhere in the newsletter.

We all know that most sheds are in lockdown because of the Covid 19 virus and many sheddies. Are you getting bored at home? You will have done most of the odd jobs you had round the house, and by now helping your wife cleaning out the cupboards, or painting and wallpapering!! This is not usual for us. I have made 2 wind toys and stone door mats for the family at home here, not sure what next on the list. Most sheddies have a workbench at home where they can potter around. When we, the Taieri shed closed its doors due to the lockdown some of our members took some projects home for something to do. Four weeks in lockdown is a long time.

One such member which we call, Elf Brian, Over the last few years, Brian has made small wooden toys to give away before Christmas to children less fortunate than us. Brian works most of the year at our shed, where he uses our scrap pieces of wood while enjoying all the fellowship of members and our equipment. At his home we envy his workshop with all the equipment he has in it.

Yes, you guessed it, he at home but not in lockdown, as he is still making the toys and painting them all, and more important enjoying himself doing it. All these toys are given to Presbyterian Social services at Christmas time for families who don't receive toys. Brian makes all these toys, and the Taieri Shed gets the credit for his toils including Brian. Keep the good work up. This is one sheddie that the lockdown is not affecting his work that he enjoys the most. I have told some of this story before but this situation is different.

Another member, who skills are painting, a life experience, but enjoys wood carving for family and friends, took home his carving project to continue with while in the lockdown. He also has done some great carving, includes walking sticks and trinket boxes.



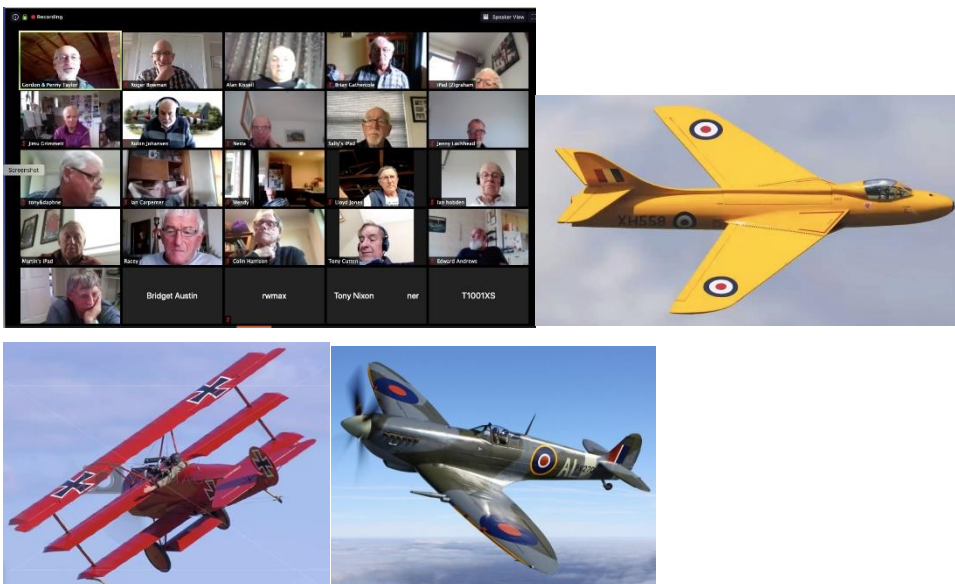
I am sure there will be many others that our sheddie members will have, or are achieving during this time. It will be great to get back to our sheds and enjoying what we do best.

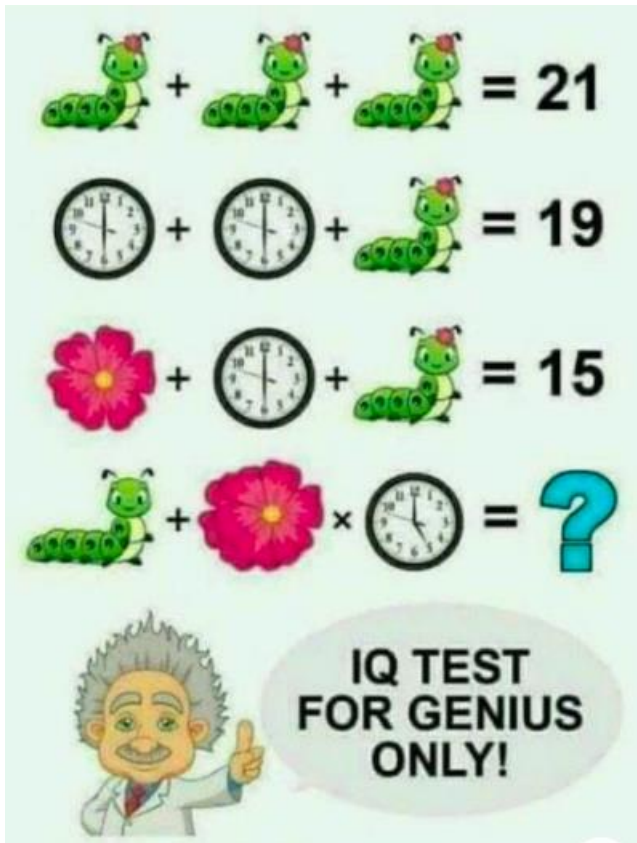
**Havelock Shed** was busy the month before the annual Havelock Mussel and Seafood festival on 14th March making seat/tables and benches - some made from broken grape posts and others from dressed planks, rat trap tunnels and pot plant holders, for their stall. The chaps had the bright idea of making child-sized seat/tables which proved popular, Fortunately their work was not wasted as the COVID-19 restrictions were not announced until the following Monday.

Once again the stall was popular with Festival goers and for the second year in a row, the Menzshed was judged the most popular community stall. Their prize was a free entry into next year's festival and a bottle of wine. Unfortunately the wine sits in the shed, waiting for the chaps to be allowed back.



The **Waimea Shed** has been keeping in touch with shedders during lockdown. Five shedders have a telephone tree to ring around members. Take a look at our Facebook [page](#) which incorporates posts of shedder activities at home. And we leapt into the world of virtual meetings with a Zoom presentation from a shedder with a passion for fighter aircraft. Pictured is the rogues gallery of attendees and a couple of shots that Gordon spoke too.





Answer elsewhere in the newsletter.

## Boomer nearly in Business

I hear the blokes in the metal shop were about to embark on a new project, but the lockdown got in the way LOL



**Identifying the real you.**

Several Government services can be conducted on-line, and our lockdown demonstrates the value of being able to do that. RealMe is a free Department of Internal Affairs service providing you with a user name and password. More information [here](#).

Post Shops and AA service centres are able to organise photo identification, but as they are closed during the Level 4 lockdown, please check back to the website for information about when the service will be resumed.

**REALME IS AN INITIATIVE FROM**  
New Zealand Government

---

**Mens Health & Wellbeing**

**DID YOU?**



---

**Maths problems Answers**

Number plates 26 letters in the alphabet so  $26 \times 26 \times 26 = 17,576$  possible 3 letter combinations. Multiply that by the 1,000 numbers -  $17,576 \times 1,000 = 17,576,000$ .

Caterpillars, clocks and flowers - The answer is 26. Solution on [YouTube](#)

---

# Dunedin

## 2020 MENZSHED Conference

By the time you read this, the 2020 National conference in Dunedin should have been history.

Instead we are all in lockdown and going no-where.

This Covid-19 has, and is causing havoc throughout the world, we are lucky to live where we are and that the government acted so quickly.

Back to the conference. What is happening? As soon as the lockdown has been lifted, the organising committee will be approaching the college to see if we can hold it there again in April 2021. As the school holiday are slightly later next year we have to renegotiate, also Anzac Day falls in the same holidays so you can see that we need to start again.

The committee has the full support of the National committee to try again.

All our sponsors, National and local, have indicated they would be supporting this if possible but who knows what the future holds.

Also, with the speakers, some may not be available, especially our Minister of Health, as he has been seen outside his bubble during the lockdown!

The committee has done most of the hard work, so here's hoping it will be easier this time.

We will be keeping you all informed as soon as we know what's happening for the 2021 Conference.

Meantime, look after all our shed members, keeping them in their bubbles till this virus has cleared and we sheddies can reunite with our mates back in our sheds doing what we do best. Can't wait

As all sheds round the country are closed due to the lockdown, we hope that your shed office bearers are keeping in touch with your members, asking about their health and wellbeing while in this lockdown. We have a welfare officer who is contacting members over the break. During this break, let us reflect back, and appreciate what our shed means to us all in the way of our health, wellbeing, caring and sharing ideas, helping our community, and getting us out of our comfort zone.

Ian Miller, Conference Organising Committee.

---

## **MENZSHED NZ Annual General Meeting.**

The AGM will be held using GoToWebinar on Monday 18 May at 7:30pm. Member sheds have been formally advised of the details.

The meeting includes elections for representatives in Regions 2 (Waikato, Bay of Plenty, Gisborne) 4 (Canterbury, West Coast) and 6 (Tasman, Nelson, Marlborough) and for the Chairman and Support Services Rep. At this stage, a nomination is held for Keith Dickson to represent Region 2 and Trevor Scott for Chairman.

The annual and financial reports will be distributed a week prior to the AGM.

Inquiries? Please contact Roger Bowman 027 8822448 or [secretary@menzshed.nz](mailto:secretary@menzshed.nz).