

# Sheddie News

October 2023

The official newsletter of MENZSHED NZ

Welcome to Menzshed NZ's last newsletter for 2023. Boy the year has gone faster than other years or is it an age thing?

This month's feature article is from Kaiapoi MensShed north of the Waimakariri River. They have set a challenge to other sheds as to who has a shed flag. Would be great to have them in January's 2024 newsletter so please send pictures to me at [support@menzshed.nz](mailto:support@menzshed.nz)

Now we have the election results in, they weren't as close as many thought they would be with National and Act taking it out (yes may need another parties help for a majority?) Will be interesting to see what support Menzsheds around NZ get from the new government.

## Feature Article

### The Kaiapoi Challenge



**Homeless.** At our annual AGM we were told that at the current rate of obtaining donations- the MenzShed of Kaiapoi could be **homeless in 18 months time!** Suttons Ltd have been a loyal supporter of the shed since 2014 when the shed building was first established on a corner of their property. Sutton had a devastating fire in January 2022, completely destroying their manufacturing building. Their review of their long-term NZ plans resulted in a decision to build a new factory in Rangiora. When this new factory is completed, possibly in 18 months, it maybe that the Kaiapoi Menzshed could be asked to move. Building a green field Shed is not cheap. The Waimakariri Council is supportive, offering a possible site and are prepared to assist with the basic site works. But- we need funds! Anyone out there won Lotto lately?

**The Challenge.** On a happier note, how many Sheds have their own Flag? Yep! Kaiapoi has recently installed a flagpole and proudly raises the flag.



"Menz Shed in Sunny Kaiapoi."



Morning Cuppa

**Coronation.** Not sure why- perhaps it was a brain fade- but at the Tuesday meeting, someone suggested the Shed should get into the coronation spirit and dress up.

So- Thursday 4<sup>th</sup> May was a colourful day. Paul- he dressed up presumably as Camilla- in a long blue polka dot dress, a fur stole reaching to his/her waist, matching hat and handbag. The whole rather fetching ensemble was bottomed off with a pair of safety boots.

Robin/ Charles- wore a crown highlighted by an orange safety jump suit and safety boots. Bert in a bright red shirt completed the trio- with safety boots.

The Kaiapoi Menz Shed flag was raised. We all stood with our cuppa and biscuit. Nobody sang. There were no speeches. A lot of good humour. **Remember- Boys just want to have fun!**



Charles was getting frisky.



Some of the gathering.

See page 44 for more news from the Kaiapoi Shed.



## Only in Aussie!

The blokes of Men in a Shed Dareton NSW are looking forward to moving into brand-new purpose-built premises after years in an old packing shed, but at least a few of the members will be sad to leave the old digs.

If anyone asks what's involved with building a 50m x 40m shed, the first bit of advice we would give them is find a good psychiatrist, and book weekly sessions!



Shed at Dareton NSW roof goes on.

Read the full article here <https://mensshed.org/the-shed-online/men-in-a-shed-dareton-is-soon-to-have-a-new-home-and-theyre-going-big/>

I like their funding model:

Our contribution has mainly been through the collection of bottles and cans for recycling.

Over the past three years we have raised over \$30,000 toward our running costs and the new build. That's a lot of beer!

## From The Chairman – Trevor Scott

It does not seem like three months have gone by since I wrote my last report. Now that the longer lighter days are here the time seems to go faster (or is it we are getting older – Ed). Over the last months there has been steady interest in creating more Menzsheds around NZ. This may have been due to the Covid effect or communities seeing the benefit having a shed in their community will bring.

I always very much enjoy visiting sheds and seeing what has been achieved both in community centred projects and in personal projects undertaken. We have collectively a huge resource of skilled men around the country.

Blue September has come and gone and it was pleasing to see that a number of sheds did something special to draw attention to this health issue. This emphasises the health and wellbeing aspect of our purpose.

October also has seen the changes to the incorporated society rules. These came into effect on 5th October and need to be addressed by sheds over the next year. At a seminar relating to the changes, I was told it is easy to download the constitution builder and add in the changes you need to make it conform to your own sheds set up.

It would pay each shed that is an incorporated society to visit the following web site for details:

<https://is-register.companiesoffice.govt.nz/help-centre/running-your-incorporated-society/complying-with-your-societys-rules/>

The executive is at present looking to gather in Wellington for a one day get together to look at how we can best service regions and sheds, how we could obtain national funding for our organisation, and what we can do to increase the benefits we offer through being a member of MENZSHED NZ. We have applied for funding to assist with the cost for this to happen. It's been ten years since we were established and it is time to look toward the future. We also will be updating our constitution ready for the AGM in April next year.

Insurance has been a hot topic this year with our insurer Rothurys asking for more information prior to establishing the annual costs for insurance of sheds and equipment. This has come as no surprise to us as many insurance companies are doing a similar process and increasing the costs to clients. We have been in talks with Rothburys about the issues.

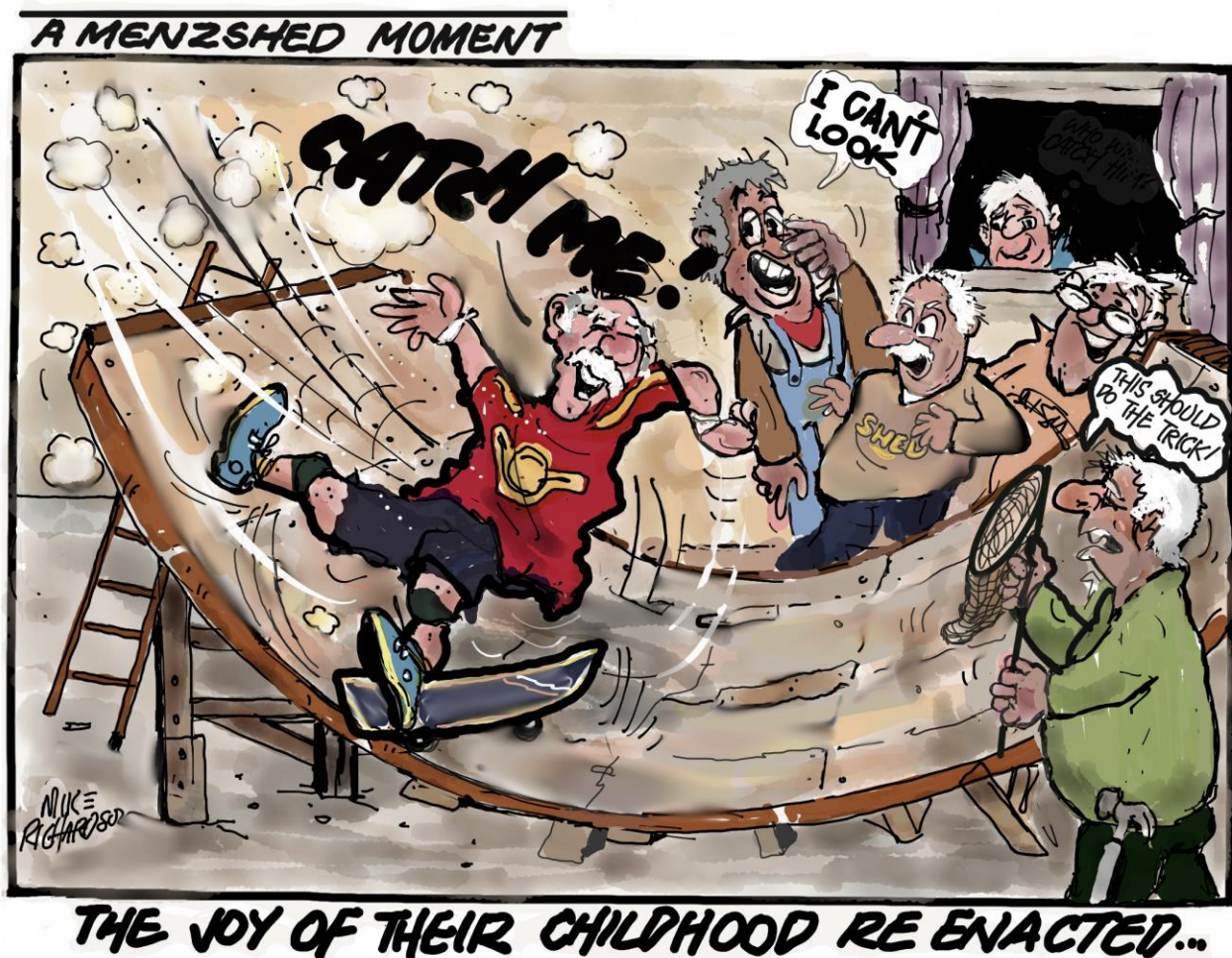
We are endeavouring to increase the number of benefits we can offer sheds and thanks to Garry our support person this is progressing well. Be sure to keep an eye on our website regarding benefits.

**I send out a big plea for sheds to look at their page on our website and update them. I have had a number of phone calls regarding opening times and contact numbers for sheds. Please check your details. Remember we can link your website to our pages if you want.**

My grandchildren were asking me the other day what I would like for Christmas. I said, "I don't know as it is still a wee way off". That gave me an idea that maybe it is time to make a few things down at the shed for gifts not only for our own families but to give to the wider community.

Take care of each other.        Regards Trevor





Life Tube contains your medical details and is kept in the refrigerator, great idea.

**LIFE TUBE**  
Age Concern

To have information for your survival available if you not able to communicate when help arrives. Fill out this form. Roll it up and place it inside the p tube, which you received with this paper. Place prominently in your refrigerator. Put the stick on the outside of the door of your refrigerator. Remember to keep your information sheet up-to-date. New sheets available from your local Age Concern cost.

NAME: \_\_\_\_\_ NHI Number: \_\_\_\_\_  
 Birth Date: \_\_\_\_\_  
 Phone: \_\_\_\_\_  
 Religion: \_\_\_\_\_

HAVE A MEDICAL ALARM? ☐ YES ☐ NO

CONDITIONS: \_\_\_\_\_

dition \_\_\_\_\_

urs: \_\_\_\_\_  
 ATION I TAKE: \_\_\_\_\_ KEPT W \_\_\_\_\_

**LIFE TUBE**  
Age Concern

## LIFE TUBE

Do you have a life tube?

A Lifetube is a plastic cylinder containing a completed medical and information sheet which is kept in the household refrigerator.

The red sticker provided should be placed on the outside of the refrigerator.

In the event of an emergency Police, Ambulance, Fire Service or Doctors are called and are alerted by the red sticker to the fact that vital information is available inside the refrigerator.

**This could be a life saver!**

Lifetubes are available at Age Concern Auckland for \$5.00. If you would like one posted to you, add \$3.00 and send to: Age Concern Auckland PO Box 19542, Avondale, Auckland 1746

Alternatively you can visit one of our offices:

Central & West Auckland – 57 Rosebank Road, Avondale

North Shore – 177B Shakespeare Road, Milford

Contact us for more information - phone 90 820 0184 or click [here](#) to email



# Region One News

## Northland and Auckland

### Kerikeri MenzShed

The Kerikeri Crew continue to be involved in a multitude of projects - both to pay our ongoing lease, also contribute to a number of community organisations we have across the Mid-North. Our community projects this year have included rebuilding the entrance way to the local Search and Rescue premises in Kerikeri; the construction of a scoreboard for the Motukaraka communities in the Hokianga; making 140 traps for the Project Island Floating classroom; and building bird feeders for the children's holiday programme at the Proctor Library in Kerikeri. In addition to this we have tried (without success) to reach out and take on another project in distant region of New Zealand – unfortunately, the Hawkes Bay Rugby Union graciously declined our invitation to reconstruct the Ranfurly Shield after its recent mishap! Overall, it has been a busy year for us and we have ensured that we have had regular BBQs, morning smokos which seem to last forever, and the occasional get together at a local bar away from the Shed.









Not much the team can't do when it comes to renovation items.

Fred Richardson is shown hard at work helping restore a pair of doors for a local church, and then we see Johnny Rattray, Brian Dornbusch and Jorgen Owre with the completed restoration ready for despatch. A letter of thanks followed from St Michael's on the Hill Anglican Church which has nestled on Tinopai Road for over 70 years of worship telling us how much it meant to them.



New equipment is being set up by Tim Griffiths and Ross Minty in the woodworking machine shop with Tim commissioning the new Bench Buzzer above and the table saw next in line. Members training and assessment on these will start shortly.



## Why some men have dogs and not wives.

The later you are, the more excited your dog is to see you.

Dogs don't notice if you call them by another dog's name.

Dogs like it if you leave a lot of things on the floor.

A dog's parents never visit.

Dogs agree that you have to raise your voice to get your point across.





You never have to wait for a dog; they're ready to go 24 hours a day.

Dogs find you amusing when you're drunk.



A dog will not wake you up at night to ask "If I died, would you get another dog?"

If a dog has babies, you can put an advert in the paper and give them away.

A dog will let you put a studded collar on it without calling you a pervert.

If a dog smells another dog on you, they don't get mad. They just think it's interesting.

Dogs like to ride in the back of a ute.

***And last, but not least:***

*If a dog leaves, it won't take half of your stuff.*



**To test this Theory:**

**Lock your wife and your dog in the garage for an hour.**

**Then open it and see who's happy to see you!**



## Dargaville Menz Shed

The Dargaville Menz Shed has been making lots of wooden children's toys which have been selling really well. I have attached two photos showing a selection of these toys.

We have also made quite a few coffins and as the word has got around, we are finding that there is a growing demand! We put rope handles on them and just give them a coat of white primer which then allows the owner or their family to paint or decorate the outside as they wish. Some have said they will get the grandchildren to put their handprints and drawings on the coffins. They also need to line the coffin with the material of their choice.







## Top Secret Community Project

The team have been working on a top secret community project.  
We hope Santa will be pleased.

**Venue:** MAZ

**Time:** 1pm

**Date:** Sunday 17th December



More details for the [Mangawhai Santa Parade here](#)

## Garden Ramble



We will join the Community Gardeners in support of the Garden Ramble. Visitors will have a choice of fresh wholesome homemade produce from the Little Shop plus bird feeders and nesting boxes from the Shed.

Two fabulous days, loads of amazing gardens.

**Venue:** our Shed at the Domain

**Time:** from 9:00am onwards each day

**Date:** Saturday & Sunday 11/12<sup>th</sup> November

Tickets for the [Garden Ramble via their website](#)



**Mangawhai Community Gardeners**

## Repair Cafe

In partnership with [Sustainable Kaipara](#) we will hold our first Repair Café. This will be an opportunity for you to keep treasured items out of landfill. Our team of volunteer repairers will

assess damaged items, provide advice and carry out minor repairs on the day.

**Venue:** our Shed at the Domain

**Time:** 9am – midday

**Date:** Saturday 18th November

Full details to follow, spread the word



## Bespoke Build Service

You may know that the Mangawhai Shed provides regular support to community groups, but did you know that individuals can also ask the Shed to fix, repair or rebuild treasured items.

To date the team have repaired an antique telephone, fixed a Lazyboy, inset a sewing machine into a tabletop. Most unusual was the production of pub skittles games. Right now they are making a wooden patu for a local flax weaving artist.







## HIBISCUS MENS SHED

*Our Place      Your Place*

### An Important Day for Our Shed

After considerable amounts of discussions, planning, draughting, evaluating, fundraising and finally building over a period of some nearly 2 years, we have finally realised the original concept of building a brand-new shed.

We were extremely fortunate to get funding from our local Hibiscus and Bays board who have been consistently very supportive of our endeavours as well as some substantial assistance from the Lotteries Commission, not forgetting not inconsequential funding from our own members. Lastly the very generous pro-bono work and materials supplied by our local businesses made it all possible and resulted in a 450m<sup>2</sup> + building and another 60m<sup>2</sup> mezzanine for storage.

From a start of foundation and building shell done by contractors, the actual fit-out internally, with the exception of some major partitions, was all done by our very own hardworking team of members, many of whom were retired trades people over a period of some 2 years.

Add to this some great donations of machinery, in particular for the engineering side, plus funding again from the Lotteries Commission for a brand new milling machine and welding gear, and we have a shed worthy of note.

All this had to be celebrated in the appropriate manner.

The Saturday of 16<sup>th</sup> September 2023 saw a bright day and a gathering of some 60+ invited guests assemble in the Community room of the new shed, where we also had copious amounts of fine items for sale made by some very crafty members.

The official opening commenced at 2.00pm with a karakia and blessing from the local kaumatua, Daryn Hohepa, followed with an address by Maurice Browning our chairman and a short report on building history and likely future by Secretary Andy Kramer.

At the conclusion of the formal addresses two "stalwart" ladies namely-Julia Parfitt (vice chair of Hibiscus and Bays Local Board) and Janet Fitzgerald (past member of the Hibiscus and Bays Local Board) were invited to officially open the shed by way of unveiling 3 suitable wooden plaques, one depicting the original blessing of the grounds before start of building, one depicting the official opening of the shed by Julia Parfitt and Janet Fitzgerald and the last one acknowledging the blessing of the building by the local kaumatua. In the gathering were a considerable number of Hibiscus and Bays Local Board members all of whom were very complimentary about what we had achieved.

There were also a large contingent of business people representing the firms who had so generously helped us during the building process, who also were very complimentary. The local press had previously done a very good article about the shed and this was no doubt responsible for the considerable flow of interested people at the Public Opening the following Saturday. Needless to say we have also had quite a number of people interested in joining us. All in all the Hibiscus Mens Shed can now be truly said to be “on the map”.

Andy Kramer  
Secretary  
Hibiscus Mens Shed Trust



## North Shore

Given a choice of buying or building a memorable gift for a loved one, what would you do? Our Shed has numerous examples of members who are able to apply their skills in Technology, Engineering or Woodworking to make memories.

**Eric Gibson** is a member who has kindly shared photos of some of his projects, made





with his grandchildren in mind.

This project started 3-4 years ago. Eric knew he would need to purchase the wheels (spoked and solid). He was able to find a vendor that had sets of wheels in the quantity that he needed and who had a method of delivery and payment that suited Eric's needs (delivery from the vendor direct to NZ wasn't possible). Finally, the wheels arrived, and Eric used the wheel dimensions to scale the vehicle. To ensure correct proportions, Eric had to base all dimensions on the wheel sizes.

Various woods are used, including **Matai, Kwila, Macrocarpa and Mahogany**. Some of the shaping was done with hole saws but hand tools were the primary tools used; rasps, files, sanding. Each vehicle required 2-3 days solid work. The cars took longer due to the detail and open carriage design.

The stock sides of the truck and the pallets on the forklift are movable and make these models interactive.

Thank You Eric for sharing your story and photos. I know this will generate a lot of interest from other members.



## Auckland Erast Mens Shed

### What do you do with a 3D Printer?



Members told us about their 3D Printer projects at a recent morning tea. Some build their own robots, like Alan's R2D2, he's currently teaching it to talk, Alex's Drone Hopper, Don's Signs, and a whole lot more. Just proves that when you get a new device, members find new and interesting ways to use it. Our 3D printers are humming away making things, nearly every day the shed is open!

### Sheddies Sept 2023 The Auckland East crew at the AGM this year



### Home Brew Workshop

Bob Lawton's homebrew workshop at the shed last week was eagerly watched by some keen members.





## Community Project in Action



Last year member Otto refurbished the "Fairy Throne" and here it is at the Ellerslie Fairy Parade held last week, doing its job of seating the "Fairies". Nice to see our work in action!

## Shed Gets a BIG Wheel!

Most organizations have one, now we have one too! Check it out!



## St Heliers Library Project



The St Heliers library reopened this week and in pride of place in the "Heritage" room were the historic pictures framed by member John Edwards at the shed. Wood for the frames was recycled wood from the library when it was pulled apart last year. The fascinating landscape picture from the end of the old St Heliers wharf, sandwiched in frameless Plexiglas, is in full view of anyone entering the library. Staff expressed much appreciation for our support.

## Visit to North Shore Vintage Car Club



Following a visit to our shed by Dave Lane from the North Shore Vintage Car Club a group of 9 of our members returned the courtesy by visiting their shed. Sausage rolls for morning tea and a wander through mountains of parts and projects were enjoyed by all. Many commonalities with Men's Sheds. Men employ their many skills for the mental and physical benefits of having a purpose and new mates to share it with.



## Bug Project at St Thomas's School



This week we completed and delivered a "Bug Hotel" for St Thomas's school in Kohimarama. Bug Artists, Roger Van Kuylenburg and Peter Ryan are seen putting the final touches to what will become home to thousands of bugs and we hope, a fascination for hundreds of children. Another community project successfully designed and delivered.

## Pohutukawa Bowl Presentation

A beautifully crafted wooden bowl made at Mens Shed was presented as a koha to say "thank you" on behalf of the library and the community to Fred Wātene, of Ngāti Whātua Ōrākei, (NWO)., who recited the karakia at the ceremony to re-open St Heliers Library (August 15, 2023).

The bowl was made on a wood-turning lathe at Mens Shed by Don Liggins using wood salvaged several years ago from a Pohutukawa that was trimmed on Tāmaki Drive by Auckland Council



contractors. When the library's community engagement librarian, Joanne Rutherford, asked Mens Shed to make a suitable koha, Mens Shed member Bernie Ward knew that the wood salvaged from the waterfront, Pohutukawa would be perfect because provenance is so important to Ngāti Whātua; for example, every tree they plant on their Pourewa Valley land has its origins in the Ōrākei area.

# Auckland Central Community Shed



## A TRIBUTE TO OUR FORMER AOTEA/GREAT BARRIER ISLAND RESIDENT AND FRIEND – ROSS McLAUGHLAN - R.I.P.

Many of our GBI residents knew Ross McLaughlan as a generous man, always willing to offer assistance where it was needed. He helped to build my Okupu home in 2001, and stayed in my caravan once the house was completed, until he moved back to Tryphena to Roy Parson's property, and later up to Schooner Bay Road.

Ross became like a brother to me, supported me through difficult times, and would drive over to give me a hand whenever I called him. He was a very experienced carpenter, meticulous in his work. My garden benefited from his attention also, especially when it was necessary to trim ti-tree. When Ross could no longer drive his vehicle around the island, he made the momentous decision to leave and find accommodation in Auckland city or suburb. Fortunately, my second daughter Jo was living in a huge accommodation lodge in Morningside, close to the Railway



Station, and I suggested to Ross that he visit the complex and he might find a place there. Nyal Smith was assistant manager at the time and as he knew Ross well from the Barrier, he was able to settle his old friend into a room right next door to my daughter. Jo and Ross became good friends, and Ross enjoyed catching the train using his Gold AT Hop card and travelling all over Auckland for free! Ross also found the Auckland Central Community Shed close by, and soon became a daily attendee, and made some good friends amongst the other retirees, who spent their days making, repairing and refurbishing lots of useful stuff. Our friend made a new life for himself, working with wood, and creating beautiful bowls, of which I have a few.



Last year, Ross was diagnosed with Myeloma, a serious cancer, and spent months visiting Auckland City Hospital for treatment. He fought bravely, suffering the side effects of the drugs, but unfortunately, remission became an impossibility during this year, and he was checking our Rest Home Care Facilities. His family offered him all their help with shopping and cleaning and kept an eye on his welfare. Sadly, once again, Ross collapsed and was taken back to hospital, where he lingered for a couple of days, pleased to see his Shed Mates one more time, before he died on the night of Monday/Tuesday 17<sup>th</sup>/18<sup>th</sup> (Unsure of the exact time) or July 2023, hopefully without pain.

Last week, the Shed fraternity held a Memorial for Ross, a Celebration of his life. My daughter attended and was able to send me photos.

Ross was a very principled individual; he lived according to his strong Christian beliefs, and his purpose was to contribute to the welfare of others. He certainly contributed a great deal to mine.

Di Simpson (Article courtesy of the Barrier Bulletin, Great Barrier Island)



# Region Two News

## Waikato, Bay of Plenty and Gisborne



The Katikati MenzShed will hopefully have a new home by this report is read.

As we have mentioned in the past, the Katikati MenzShed is fortunate to have been included in a new building project funded by the Western Bay of Plenty District Council, and supported with additional funding from TECT.

We will be sharing the building with two local community service groups, the Night Owls security patrol and the Reach out Community Trust who are transport providers for Katikati residents needing transport for medical appointments. Both these organisations will house their vans/cars at one end of the building, and the Katikati MenzShed get the remainder of the building. From the picture, the second personal door is to the common toilet and the 3<sup>rd</sup> our access as well as the two roller doors.



We have also been fortunate to have had a donation from one of our members who has provided the funding to electrify the roller doors so no pulling on chains to open them.

Some of you may have met our past Chairman and the founder of the Katikati MenzShed, Ron Boggiss, who unfortunately passed away last year. Ron has continued his support of the Katikati MenzShed with a donation that we have put towards a Dust Extraction System.

We have also been fortunate to have received grants from Grassroots Trust who have provided funds to allow us to line the internal walls.



Other grants from Bay Trust and Mercury Energy have allowed us to have 3 Phase power to the site and also gone towards replacing some of our older machinery that was getting a little bit past it. Carbatec also gave us really good pricing on a new Thicknesser, Drum Sander and also a Belt Sander, so we will be dealing with nice clean timber with future projects.

Ground work around the site has almost been completed, so the building is almost ready for final inspection and sign off.



Once the building compliance is issued, we hope to be in within a week or two. Of course, another thing that may be an issue on our opening date, is the state of the Mayor's diary.

Dave Watson  
Secretary



# Mount Maunganui Menz Shed

## Work boot Sale

We have available a small supply of New Steel Cap Work Boots.

The Engineering Firm who supplied us has moved, so we were able to acquire these boots.

Available to all Menz shedzs and their friends @ \$30.00 per pair

Steel caps, Lace up or slip on, in black mainly and a few pink ones.

However only available in these sizes: 4, 6 or 8

Please refer to photo, Contact Keith Dickson Ph 0211702394 email [k.m.dickson@kinect.co.nz](mailto:k.m.dickson@kinect.co.nz)



## Whakatane Menzshed

At the end of September a few of our members joined the Spring Fair for the local Anglican church which was fund raising for earthquake strengthening of the building. This involved us setting up a table of our best woodwork projects to sell these and to promote what we do in the community.

As befit the occasion we had a complete coffin to show in the display, which attracted quite a few questions from the public, and our supporting brochure on coffin making was a popular handout. A 'koha' contribution to the Parish was made, and the shed also sold some items which helped boost our funds a little.

### Picture Gallery



Antique Chair before and after Restoration by Noel



A small outdoor seat ready for Client to collect



Restoring of small Table (after sanding)





Podium ordered for a Local School Sports Co-ordinator  
(Supported by Bunnings Warehouse-Whakatane)



Whirly Seagull chasing a Raptor







Whirly Penguin waiting for a Breeze



Kauri Table and two Footstools / Storage Units



Some Cane-work done for a Client



Dave I. completing the Restoration of an Old Spinning Wheel

## Sales

To help meet our costs, mainly building rental, we have for some years been making ply-wood coffins at a very reasonable price. People who buy them find them easy to paint or decorate to their taste. A great family activity, which helps to make the occasion memorable. Last month saw four coffins go out the door, each to help a bereaved family, who simply find that other commercial options are beyond their means.



# Region Three News

**Taranaki, Manawatu, Whanganui, Hawkes Bay and Wellington**

## Henley Mens Shed

“A warm small whisper to his soul” sparked a remarkable mission three years ago for Hokitika carver Jimmy Gordon.

The retired wood turner has toiled for years to craft bowls from recycled native wood and pounamu (greenstone) to hold Anzac Day poppies, with a goal of distributing one to every RSA in the country -- and beyond.

He’s made about 280 bowls in the past three years, and with the help of “God moments”, they have found their way around the country and further afield. One even proudly sits in the New Zealand embassy in Washington, DC.

Tinui already has a bowl and Masterton’s is currently being mounted by Peter Albrett, a retired serviceman and member of a family that has served his country from World War I to today. Peter is vice-chairman of the Wairarapa RSA and a member of Masterton’s Men’s Shed. His plinth features a Christian Cross.

Gordon, 75, is a key member of the Lions’ wood cutting team and, with his family, has organised the community Christmas dinner in Hokitika for more than a decade. But it’s his commitment to honouring fallen soldiers that saw him take on a massive task during lockdown.

“I’ve just had a calling. It was a very strong calling, two or three years ago, and I just carried on. The local people here in Hokitika came on board and donated timber and pounamu,” he said.

His bowls are now in almost every RSA in the country, he said, as well as in Parliament, about 30 marae with a connection to the 28th Māori Battalion, churches, and sites with significant Anzac meaning, such as the tiny Wairarapa settlement of [Tinui](#), the site of New Zealand’s first Anzac memorial and service.

The bowls are not for sale, and have never been, but the Masterton RSA has made a generous koha.

“They’re all given away free” said Jimmy. They’ve been paid for by people that have died in the war so that we have a good life.”

One of the last of Gordon’s lovingly crafted bowls found its way to Washington after a chance meeting with American tourists Mark and Gaye Quinn.

The Quinns first met Gordon at the Hokitika Craft Cooperative in 2019.

They returned earlier this year and, after learning of Gordon’s poppy bowl mission, offered to take one back to sit in the New Zealand embassy – though they had no idea how to make it happen.

“Jimmy assured us though, the poppy bowls, somehow, seem to find their way to where they are intended to go,” Mark Quinn said.

The couple had expected to pay for shipping themselves, but when they arrived at the airport and explained what they were doing Air New Zealand arranged for it to be transported to their home town of San Francisco for free.

They eventually wrangled an invitation to present the bowl to the embassy on April 17, ambassador Bede Corry accepting it and telling them it would be positioned in a place of honour.

Mark Quinn said the couple were grateful to have helped Gordon, calling him a “New Zealand treasure”, while Gordon said he was “absolutely chuffed and honoured” at his bowl’s new home.

Gordon said many parts of his poppy bowl journey have felt pre-ordained.

“Things like that with Mark and Gaye turning up in the gallery – I call these God moments. It couldn’t have happened in a million years.”

Gordon said as word got out about his mission, he would find piles of native wood and pounamu left at his door, as well as support from local businesses, schools and residents.

Postal services have helped get the bowls and the occasional hardwood plinth, around the country, from North Cape to Stewart Island, with another earmarked for New Zealand’s Antarctic outpost, Scott Base.

Gordon now plans to use the last of the donated rimu before stepping away from the work.

One last bowl destined for foreign shores was presented to the New South Wales branch of the RSA in Sydney.



Peter Albrett with the bowl gifted to the Wairarapa RSA.



Jimmy Gordon with one of his bowls



# MenzShed Kāpiti

## Peter Blackler honoured with workshop name

By [David Haxton](#) 16 Aug, 2023



MenzShed Kāpiti has played a key part in Peter Blackler's retirement years. Photo / David Haxton

Some people have grandstands named in their honour, some have street names, but for Peter Blackler, it's a workshop that will bear his name.

Blackler has been an instrumental figure at MenzShed Kāpiti, in Waikanae Beach, since the branch opened many years ago.

The large 170sq m workshop is the latest development at the branch and its naming is a fitting tribute to someone who has made a huge tireless contribution.

"It's quite an honour really," the 80-year-old said.

The workshop will mainly be a woodworking area with benches, lathes and more.

Blackler is one of those blokes every organisation would be glad to have – knowledgeable, respected, personable – in other words a go-to guy.

His skill set and temperament were developed over a lifetime of hands-on and mentally challenging work.

Blackler grew up on a small farm in Marton and acquired a lot of handyman skills early on with a passion for anything mechanical or electrical.

After leaving school he trained as a radio technician and completed an electrical engineering degree at Canterbury University.

His career started in 1961 at Civil Aviation where he largely worked in a variety of important roles, and held senior management roles, until retiring in 2011.

It was in 2010 when wandering through the Easter market in Mahara Place, Waikanae, that he read a flyer about an upcoming meeting to discuss the possibility of creating a Menzshed chapter for Kāpiti.

It intrigued him, especially as he had recently used his skills to extensively renovate his Waikanae home, and was keen to get involved with something else.

At the end of the meeting, Blackler was one of 27 men who signed up and paid the \$10 membership fee to enable MenzShed Kāpiti to become registered as an incorporated society.

After discussions with Kāpiti Coast District Council, a small building at the council's works depot in Rangihiroa St was offered to the group for \$1 rent per year.

A year later, the council relocated their works facility to Paraparaumu, which enabled the branch to broaden its footprint to a three-bay tractor shed, and beyond.



MenzShed Kāpiti's Peter Blackler inside a workshop that is being named after him. Photo / David Haxton

And as the years progressed, and membership increased, more facilities were developed including a veranda, large meeting room/purpose-built kitchen/accessible toilets, and more.

The building work has mostly been done by members, under the supervision of a qualified builder, but could not have been completed without the generous support of funding partners and valuable assistance from local suppliers and service companies.

Blackler has been a leader in site development because of his engineering and management experience.



He was also involved with MenzShed New Zealand where he played a key role in developing the constitution and rules.

He's stepped down as the national body's treasurer and will stand aside from his branch treasurer role next month.

"Unfortunately I haven't got the energy to carry on with it all."

Despite taking a step back from responsibilities, he's always available for people who need to "tap into the institutional knowledge and so forth".

Moreover, it was "great to see the other guys taking on the responsibilities".

Today MenzShed Kāpiti has about 140 members which typically, on Tuesdays and Thursdays, attracts 50 to 60 men who work on various community projects as well as enjoy comradeship.

Blackler, who has also been a long-time member of Wellington Vintage Machinery Incorporated, has loved his involvement with the branch.

"The development of the facilities has been amazing to see.

"It's also shown there's a great need for the branch.

"Over the years, a number of them [members] have said that if it wasn't for the shed they probably wouldn't be around.

"I didn't take that too seriously until I got involved with a suicide prevention group and realised what the guys were potentially telling me.

"Overall though there has been a great satisfaction to see how it has developed and a lot of enjoyment for the conversations and banter.

"It is fantastic."

The Peter Blackler Workshop will be officially opened on Saturday, August 26.

Article from the Kapiti News

## Menzshed Manawatu

We have been busy recently undertaking several conservation projects out in the community. As part of conservation week 2023 the shed undertook a few community projects designed to increase awareness of issues and assist groups and a number of public events to assist and mentor people to complete projects such as tui feeders and predator traps.



We undertook to prepare materials the Hokowhitu cub group to enable them to build. They learnt much about collaborating and helping as well as achieving a high level of satisfaction by taking the completed projects back to their families.



DOC and Horizons regional council also asked the shed to take part in pre-cutting and assisting a series of school groups to make rat trap tunnels which they could take back to their schools. The



looks on the children's faces made the effort worthwhile as many had clearly not been involved in such hands-on tasks before. The event was held at the Wild Base centre in the esplanade.

The school day was then followed by a public day where the objective was for people to turn up to see a series of static displays about conservation activities then invited to assemble a trap themselves and take it home to assist in the predator trapping project. The plan was to assist people to build 100 traps on the day.



We are also involved in producing a chain of bat motels for a population of native bats living in the Ruahine ranges. Another upcoming public event for Horizons is a weta motel building, for which we have pre-cut 100 Weta motel kits.



## Menzshed Naenae

We produce a large amount of native wood shavings. I made a kennel for my neighbour and wanted to put some carpet inside. I contacted a kennel (dog) hotel and asked about it. She said NO. She told me to use a hessian sack (pillow size), put the shavings into the sack and sew it shut (with waxed hessian string). When I went back to the shed and started to make the pillow several blokes said "what a good idea". We could make these pillows and sell them to various places for fundraising in pursuit of our charitable interests.

I'm also attending to packaging, I need 700x500mm ziplock bags or sell them unbagged with an A3 poster to go onto the wall in a retail outlet. I'd like to get some help from blokes in more rural settings to approach farm/pet stores and/or retailers with multiple outlets. I've put it up on Trademe - no sales yet.

Peter EW Lowrie  
029 976 6712



# Doggie Comfort Pillow

Two sizes:  
500x700  
1100x700

A charitable product brought to you by:

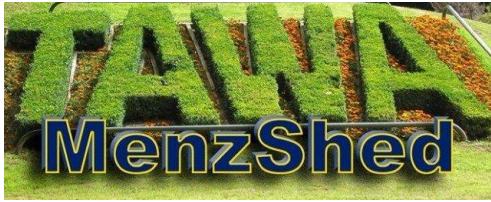
**MENZSHED**®

28 Treadwell St  
Naenae

All Natural Fibre filled with native timber shavings.  
Mildew / Mould resistant  
Anti – Infectious  
Hypo – allergenic  
Hand Made  
For small, medium & large dogs

Made in New Zealand  
Provides meaningful work for  
differently abled  
Recommended for outdoor kennels





# Shed Digital Check-In System

## What is it?

A computerised system for tracking shed member attendance, authorise member use of designated electrical equipment, identify when breakages occur, and facilitating equipment safety training.

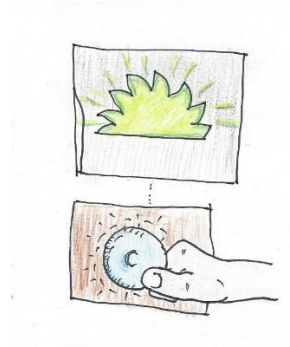
## Who can use it?

Any organisation that wants to know who is onsite, who is using machinery and what safety training is needed.

## What does it use?

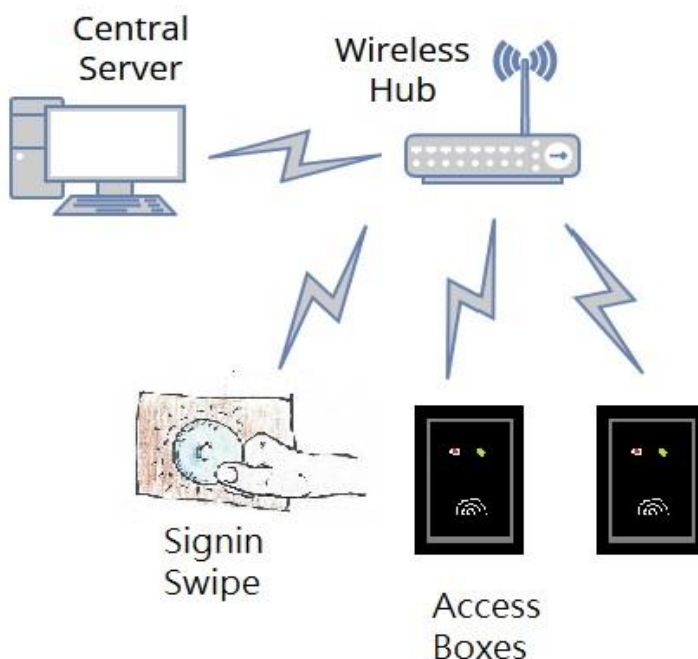
The system comprises 4 types of devices:

- a small PC for management
- a sign-in box
- one or more access boxes
- a wireless router for communications



## How does it work?

A small PC acts as a central server and communicates with a sign-in device and one or more access boxes. The devices and boxes are using small Arduino computers which talk through the wireless router to the central server. Each Arduino has a swipe sensor reader to identify the user and validate their access. If a breakage occurs the last user is known.



## Would you like to know more?

Bookmark the github entry for the system at <https://github.com/TawaMenzShedNZ/SCIS>. An initial release of the code, build plans and documentation should be released to all sheds in the first half of 2024.

### Note:

Tawa MenzShed proposes to publicly release all the details for its hardware and software system for recording member attendance and enabling proficient users to have secure access to specified machine tools. The machine usage record can also be used to study breakages and improve safety training.

The release of all the information will be about **April 2024** on an open-source platform above. This will ensure that all hardware and software is properly documented so that any Shed can make and implement their own system using this open-source material.

In addition, on an ongoing basis, the collaborative nature of this open-source platform means that any issues or enhancements can be seen by all shed users, who can then manage any upgrades or modifications that they may choose to implement.

We are taking this open-source approach because, as a Shed, we do not have the resources to respond to every enquiry, nor be able to resolve every individual implementation issue. The collegial nature of this open-source platform will, in most cases, result in all problems being resolved by the wider collaboration.

In the meantime, interested potential users are welcome to visit Tawa MenzShed any time we are open (Tuesday, Thursday, and Saturday 10.00 a.m. till 1.00 p.m. – Sunday 1.00 till 4.00) and see the system in action for themselves.

### Authors and editors

Ian Dennison, John Gibson, and Gary Beecroft

Email: MenzShed TAWA [tawamenzshed@aol.com](mailto:tawamenzshed@aol.com);

Website: [Tawa MenzShed](#)

MenzShed National link [Tawa MenzShed | MENZSHED New Zealand Incorporated](#)

### Ed

Would be great if other Sheds could become involved with this project as this a great idea that would help manage members use of machinery in the Shed and how machinery is used (or misused). I will keep us up to date in coming newsletters.



# Region Four News

## Canterbury and Westland

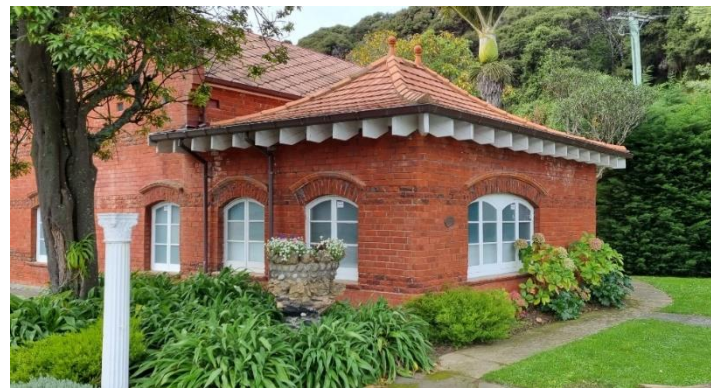
### Akaroa Mens Shed

Our Shed has been involved in some interesting projects this last quarter.

#### New Donation Box for The Gallery Akaroa

Back in May the Akaroa Men's Shed was asked if it could make a new Donation Box to replace an old worn out one. It needed a new design, so Rich Sales a member and ex Architect, and model railway enthusiast in his early life; put his hand up to undertake it as a design and build project.

Modeled on a measured drawing of the pumphouse part of the Orion Gallery premises, it was made as a 1-30th scale model, from native timbers and cedar veneer. Involving many hours of work during the winter months, it turned out to be a cracker and was gratefully received at this years opening of The Gallery in October. Many thanks were given to the Men's Shed for doing this community project.



#### Replacement Verandah Posts for a local Restoration

Being in a historic precinct, the Akaroa Men's Shed often gets asked to help and repair items for old building projects. Last month a resident turned up with a full sized verandah post that needed some additional replicas made to match. Sourcing new exterior grade laminated wood for the

posts was a special order and creating the chamfered edges was a bit of a challenge. Well done team.





## One of our Oldest Members

Dick Behrent aged 92, is one of our oldest active members. Every week we pick him up from his rest home and he settles down to enjoy participating in our current projects. He is seen here painting one of our Tui bird feeders. They are a popular item sold to locals on a regular basis.





## Kaiapoi Mens Shed (continued from Feature Article)

### Other Works



A garden seat undergoing Major restoration



Roadside stall



Wood carving

Handrail





# Rolleston Men's Shed

## Computers for Sheds

The computers finally turned up and are slowly being dispersed around the country, a couple to Renwick, 4 to the Timaru area, lots around Rolleston and Christchurch. Unless otherwise wanted, they have Linux Mint installed and are supplied with a keyboard and power cord. A mouse and monitor is up to the receiver to organise. Monitors at a Christchurch ECO Shop cost \$20 - \$35 so are cheap enough.

If your Shed wants a desktop computer, contact the Rolleston Shed. There is also a Computer & Electronics Newsletter on the Rolleston Men's Shed's website and can be sent to those who want it. Contact the Rolleston Shed if you want to be on the mailing list.

**3D Printing** – The Shed has been donated a 3D printer and the first job it got was to make a replacement part for an electric lawn mower. The orange one is obviously the broken one.



This was followed by 20 covers to fit over bolts and plates fixing a school's Chromebook computers.

The fix was necessary because Acer couldn't make some of their laptops properly and the hinge mounts break.



If one was broken, it was just a matter of time before the other would break so both sides have to be reinforced.

Shown the top of a Chromebook, left cover off and right cover fitted. The bolts were cut off flush with the nuts and contact glue liberally applied. The cover was then fitted. The "OK" is a masking tape label to show it goes and is ready to be returned.

**Advertising** – It was mentioned in the monthly article provided to the local community newspaper that the Shed was making rose trellises. The next day there was an email asking about them and from the picture sent to the correspondent, interest in purchase.

From this, do other Sheds make things for sale? How are they advertised? Does your community have a free newspaper that wants articles? If yes to all of that, then there is a way of advertising things to make money to help run the Shed.

**Produce Cart** – Burnham School recently asked for a produce cart, having heard the Rolleston Shed had made them before.

## Coffee Tables

Just one example, a bit of wood lying around and there's another coffee table. These go to the Salvation Op Shop and the longest sitting around to be sold was two weeks. The one shown was originally a lampstand.



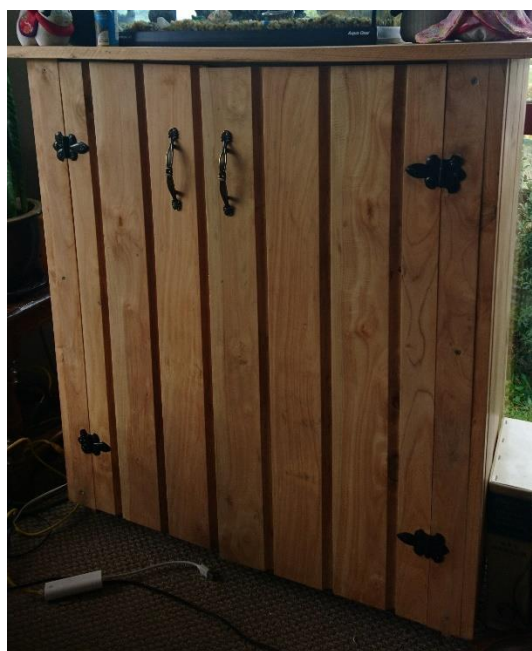
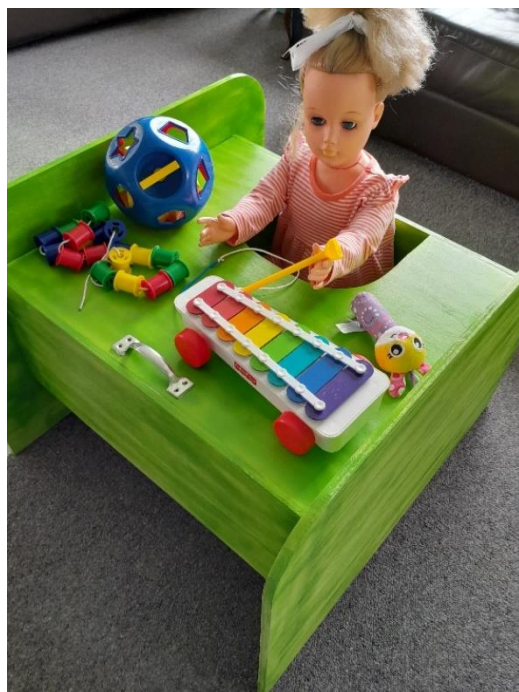
# Region Five News

## Otago and Southland

### RIVERTON MENZSHED

Greetings from Riverton Menzshed!

A busy year is fast coming to an end with many projects completed and despatched to grateful recipients. One such project that had us all interested was the construction of a special 'spica' chair for a little girl who is about to have surgery for hip dysplasia. A loving Grandmother had the idea that Menzshed could construct the chair, found a plan online, and arrived at the shed with wood and instructions for making this important piece of equipment for the time when her granddaughter comes out of hospital after surgery. Menzshed members immediately set to work and before the day was out, had it cut out assembled and ready for pick up and painting. A very worthwhile and satisfying project completed. Below is the finished result that will hopefully contribute to the speedy recovery of a brave little girl.



Our Women's Workshop Day is producing some pretty amazing projects too. We are fortunate to have Menzshed members who are willing to come an extra day to support and encourage a small but enthusiastic group of women as they learn new skills. Below is a shoe cabinet made with recycled wood and fittings, just one of a number of projects completed by Women's Workshop member Nami.

If the warmer weather brings you to the deep south of New Zealand, our Menzshed is open Wednesday 1.00 until 4.00 p.m. and Saturday 9.00 to 12.30 p.m. and Women's Workshop is Thursdays 1.00 to 4.00 p.m. We'd love to welcome you to our shed and show you around.

Ngairé Bartley (Secretary)



# Region Six News

## Tasman, Nelson and Marlborough

No news from Region Six

My doctor said now that I'm older  
I need to install a bar in the shower



## Lithium Ion batteries

In case you missed it, here is a link that will take you to the TV1 Sunday programme about the danger of the batteries bursting into flames.

<https://www.1news.co.nz/2023/10/15/almost-killed-me-the-fire-risk-lurking-in-almost-every-home/>

You should check with your insurance company to get their take on the use of the batteries and how your cover could be voided if their requirements are not followed.

## Next Newsletter

The next newsletter is due for publication at the end of January 2024. The deadline for articles for that newsletter is **Friday 19<sup>th</sup> January 2024**. When you have completed an interesting project or done something of interest with others down at the shed, send us an article. Don't wait for the deadline as it gives the editor time to arrange articles. It is always good to see pictures with an article. **Format for article please use Word and Jpeg for pictures as these are easy to work with. Please limited article to around 200 words.**

***Please do not send your newsletter as I will only publish articles sent.***

Send articles to **support@menzshed.nz** Cheers Garry Bryant Support Services and Editor

---



A reminder to Facebookers that we have a shedder group called the MENZSHED NZ shed forum at <https://www.facebook.com/groups/917022518450093> Presently 48 sheds are represented by 231 shedders. To participate, visit the site and answer the two screening questions. After your application is accepted, you will be able to read and post to the site.

## Sponsors and Discount Benefits

Visit our web site to find out more about each company and the benefits they provide to member sheds. [www.menzshed.org.nz/membership/benefits/](http://www.menzshed.org.nz/membership/benefits/)



## WORKSPACE LED LIGHTING