

Sheddie News

May 2024

The official newsletter of MENZSHED NZ

Welcome to Menzshed NZ's May 2024 Newsletter.

As I mentioned in February's newsletter the publication dates have changed to February, May, August and November. Looks like this has an effect on Shed's sending articles for this one.

Remember this is your newsletter (not mine) so please share "what's going on in your shed", we are all interested to know.

Feature Article

I thought it would be of interest to highlight savings/discounted services that Sheds can make on the use of goods and services from suppliers and the government.

Trade Me

Discounted services

Website to reference:

<https://help.trademe.co.nz/hc/en-us/articles/360007001472-Information-for-charities-and-fundraisers>

Words coloured blue you hover over them while holding down the ctrl key and pressing enter to go to the corresponding web site link (page).

Information for charities and fundraisers

We can help charities and fundraisers list auctions, fundraise, and raise awareness of your cause.

- [If you're a registered charity](#)
- [If you're not a registered charity](#)
- [Charity-related campaigns and coolness](#)

If you're a registered charity

If you're registered with [Charities Services](#), we'll give you a 50% instant rebate on success fees. The rebate is instantly refunded to your Trade Me account when the auction closes.

To register:

1. [Set up a business membership](#) for your fundraising auctions.
2. Tell us about your charity and plans by [completing the 'Charities on Trade Me' form](#).
3. We'll be in touch to let you know once we have approved the membership.

If you're not a registered charity

We know lots of Kiwi are awesome and love to fundraise on behalf of charities – even if they're not affiliated with the charity officially. And we want to help you!

To get in touch:

1. [Complete a 'Charities on Trade Me' form](#)
2. Include a summary of what you're planning on listing, and to who you're donating the proceeds.
3. We'll get back in touch to let you know what we can do to help.

Charity-related campaigns and coolness

Got something cool or unique to share? We love seeing charity-related campaigns, special listings, and all-around awesomeness.

[Get in touch with our charities team.](#)

IRD

How to get a Resident Withholding Tax (RWT) exempt status

IRD Website to reference:

<https://www.ird.govt.nz/income-tax/withholding-taxes/resident-withholding-tax-rwt/using-the-right-rwt-tax-rate/getting-an-exemption-from-paying-rwt>

Resident withholding tax exemption register

Our register lists everyone with a resident withholding tax (RWT) exemption, by IRD number.

[Resident withholding tax exemption register](#)

If you have an exemption, this means you do not have RWT deducted from interest and dividends you get from payers, for example banks or other financial institutions.

Applying for an RWT exemption

You can apply for an RWT exemption if you meet the criteria.

If you are a charity registered with Charities Services, you do not need to apply. We will automatically put you on the register. But check they have by checking the register above.

We will tell you when you are added to the register and, if applicable, what the expiry date for your exemption is.

If your exemption is due to expire, you can reapply.

[Apply for a resident withholding tax exemption](#)

Cancelling your RWT exemption

You need to let us know if you no longer meet the criteria for an exemption, unless you're a charity being deregistered by Charities Services.

We may cancel your RWT exemption if you no longer meet the conditions it was issued under, for example if you:

- do not earn \$2 million a year (if applicable)
- are deregistered as a charity with Charities Services.

Check that your payer, for example your bank, knows about any changes to your exemption status.

When you've been charged RWT and you have an exemption

If you've had RWT deducted from a payment made to you but you have an exemption, you can request a refund by filling out the IR454 form.

Resident withholding tax - refund request IR454 2021 (PDF 67KB) [**Download form**](#)

Menzshed NZ Supplier Benefits page

<https://menzshed.org.nz/membership/benefits/>

Where Trade Pricing is on offer or lower fees.

We are always on the lookout to add more suppliers to our benefits page so please let us know if you come across any and where all sheds could benefit.

It is always a good idea when you do purchase items that you make it known to the supplier that you are a Menshed and not for profit so is there a discount or better price available. No harm in asking.

Menzshed NZ Toolbox

Sections 15 and 17 of the Toolbox offer discounts available from Google for Gmail and Gdrive and Microsoft for Office 365 and other MS products

<https://menzshed.org.nz/tool-box-items-password-protected/>

From The Chairman - Trevor Scott

It does not seem like three months has passed since I sat down and wrote the last report. The only thing that tells me it is late autumn is the very heavy frost we had the other day. It took out many plants in my garden.

Things are moving along nicely with our AGM set for June. This year we see the following folk stepping down from their positions on the executive.

My thanks go to Keith Dickson who has served for many years as the Regional Rep for Waikato, Bay of Plenty and Gisborne.

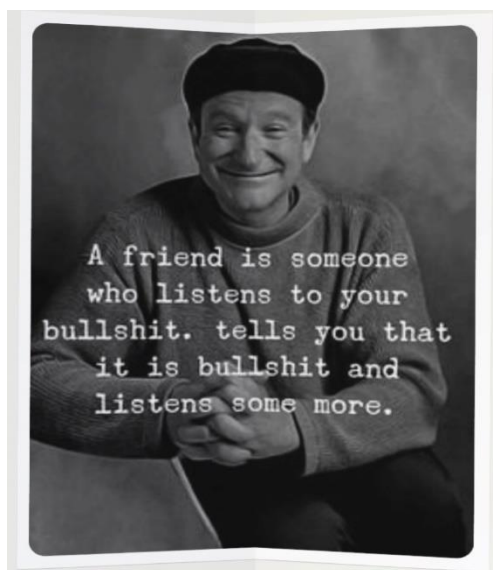
I am standing down as Chairman and Regional Rep for Canterbury and Westland. So if someone in Canterbury/Westland could take up the challenge I am sure the executive would be very pleased.

The conference in Invercargill set for April 2025 is progressing well. I see an email has been sent out to all sheds asking for an indication of number who are likely to attend. This by far is the most important event as it brings men from all areas of the country together. What better way to share ideas, be inspired by the presentations, sharing what you do down at your shed.

There has been a good number of sheds applying to become members of MENZSHED NZ. We have around 135 member sheds at present and look forward to the number growing in the not too distance future. We have approximately 4800 members on the books. Sheds are doing great things for their communities.

The reps have been busy with enquiries to attend to and the setting of Hub Meetings in their regions. This is a very good way to spread the word and have direct contact with MENZSHED NZ. In stepping down as chairman I look forward to the new chairman and executive members taking up the challenges and the changes they may bring to the organisation.

Take care, regards to all. Trevor



"Theory is when you know everything but nothing works. Practice is when everything works but no one knows why. Around here, theory and practice are combined: nothing works and no one knows why."

Region One News

Northland and Auckland



Salvation Army Food Bank Blessing Ceremony

In November 2023, a team at the Shed led by David Wardlaw and Bernard Gardner completed a food bank for the Salvation Army.

The Salvation Army wanted to have the food bank blessed before commissioning its use. That blessing occurred on March 4 and representatives from various community organizations, including Bunnings and the Shed were invited to attend.

The background of this food bank is that Bunnings donated the lumber and materials for construction and the Men's Shed managed the construction and delivered it to the site as well as put in the concrete paving.

Included are photos of the Blessing. Prayers were giving blessing the food bank and praying that the food bank meets the needs of those who are struggling financially. Hands were put on the food bank and all observers were invited to also lay hands on the food bank giving their personal blessing, hopes and wishes on its success for the community. Thanks Richard R. for taking the photos.





Albany Settlers Lifestyle Village Menzshed by Ian Langley

Looks like we are starting the year with a few new projects and a new member.

One of our newer members decided he wanted to make something with a bit more of a challenge, so he decided to make a couple of jewellery boxes with detailed lids.

The photos really tell it all and Bryant was very pleased with the result as you can see from the attached photos.



Boxes open showing lined inside with sliding ring box



Showing the inlay with different woods

Our new member, David, who joined the shed last year has progressed well and is now learning to use the wood lathe. We purchased some new carbide tipped tooling which is very easy to use and reduces the risk of the chisels 'biting you' if you know what I mean.



David concentrating on the job.



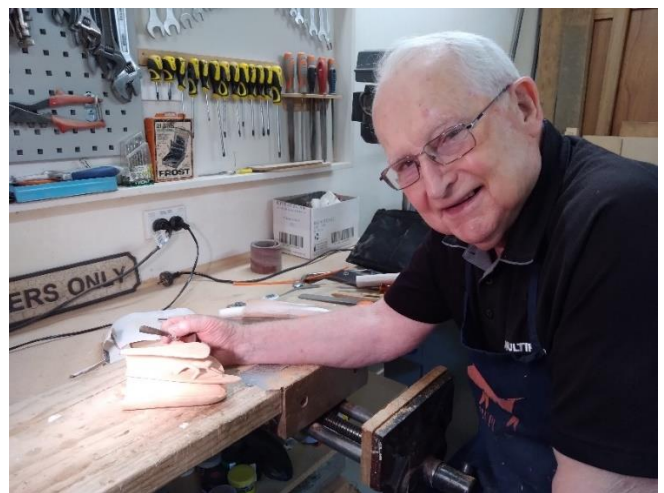
These carbide chisels cut so clean and reduce the amount of sanding.



The kit comes with 4 tools and an extension handle in a nice, lined box

The kit was purchased from Temu and was very well priced for what you get. They are well engineered, and spare inserts are available. Care must be taken not to drop the chisel as carbide chips easily and will damage the sharp edge.

Our resident carver, Brian, is at it again. This time he produced a carving of a surfer inside a large wave. I can remember when Brian first joined our shed some years ago now and didn't know anything about carving, now he is up with the professionals. Well done, Brian.



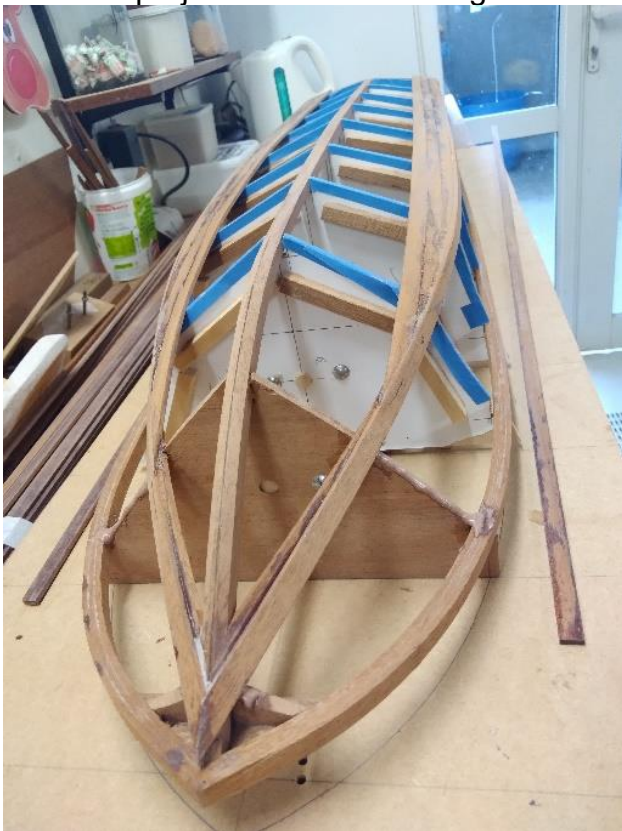
A close up of the finished project prior to varnishing.

Brian just loves carving different items and he gets a lot of fun and pleasure from it.

Over the Christmas period I worked on furniture for a local college's school Chapel made from walnut. It turned out well and it fits the chapel perfectly. I made, from left to right, the Lectern, Altar, Small table, and the Candle holder. Walnut was the preferred timber as the priest chair was made from a dark timber and had to match it.



Now this project is finished I can get back to my build of a 1/10 scale of a Venice water taxi.



Fitting gunwales and chines.



Dry fit of deck.



Our purpose: To Sustain or Enhance Members' Mental Health and Wellbeing

Great Fun at the Panmure Fun Day



At the recent Children's FUN DAY in Panmure 180 of our little race cars were assembled, decorated and raced on our track. And we sold hundreds of dollars of toy stock! Four members of the shed said they would help but 16 turned up on the day.

New members are pouring into the shed at present. Don Liggins and Bill Lehmann ran one of our biggest Machine Introduction sessions last weekend, with people eager to work in the Shed.



How To Build A "Perfect" Acoustic Guitar?



Sheddie Mohhammad gave a presentation on how to make an acoustic guitar using NZ native timbers like Swamp Kauri and Pohutukawa, at a recent morning tea. An Exercise in Patience and Perfection! Its on video for all to enjoy.

Go [here](#)

<https://www.youtube.com/watch?v=kL6PSmTSLL8&t=3s>

Don't Buy It! Make It

Sheddie Paul saw a birdhouse in a shop and said. "I can make that better!" and he did!



Latest Shed Job Out The Door



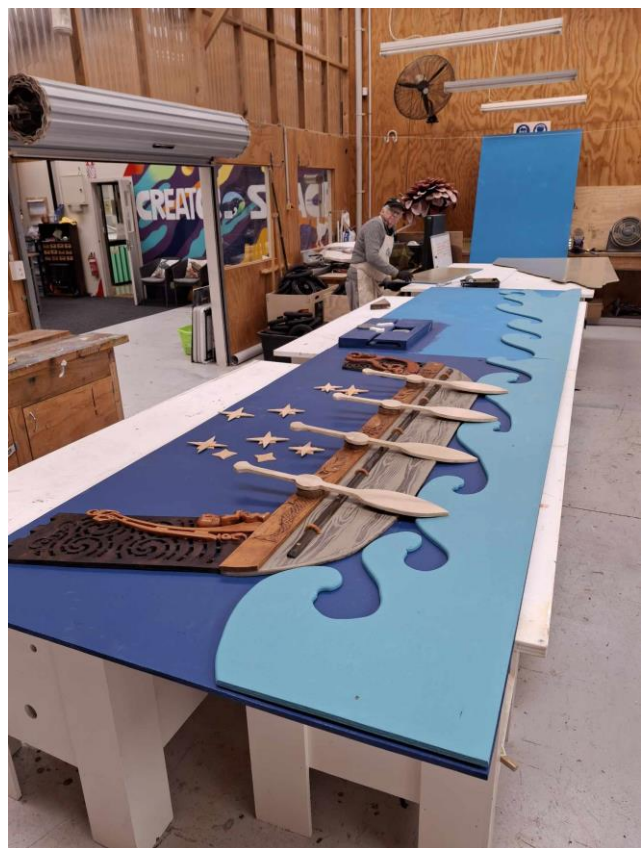
A Sandpit digger. Restored for Upland Road School by Peter Upshire and Douglas Ormrod. We are becoming quite adept in the shed at these repairs, as diggers have a tough life! Thank goodness, for the "Good Guys" at the Shed!

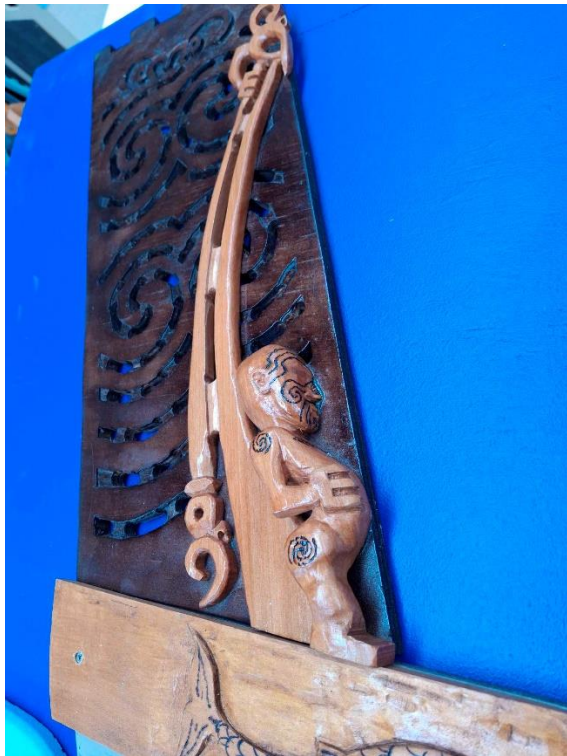
Manurewa's Boomer Shed: Balance Bikes and Tactile Murals

Kia ora! This month, the Boomer Shed in Manurewa has been buzzing with activity. We've kicked off a zero-waste project to turn unused pram wheels, saved by 3R Group, into 100 balance bikes. Each volunteer has a special job in our production line, and soon we'll be assembling the bikes for tamariki in our community to enjoy.

Our mural project for the Blind Foundation is also progressing well. We're creating a tactile mural for BLENNZ Homai School, which supports children who are blind, deafblind, or have low vision. We're transforming three plywood panels with vibrant designs that represent our national cultures and students' ideas. We've nearly finished the main parts and are now adding sensory elements to make the murals more interactive and fun for the students.

In between these exciting projects, we're also busy with repairs and improvements at the shed. Next month, we'll continue offering our repair services at the Manurewa Repair Café, helping to fix and breathe new life into various items brought in by people in the community.





Region Two News

Waikato, Bay of Plenty and Gisborne



Some bits from Hamilton Community Men's shed for next newsletter. Cheers Brian Thompson

This is a contribution from Treena, one of our girls in the shed



making her Waka out of palm tree bark



Carry box using old saw handles which Treena has repurposed



Keith made a new sign for the Shed



Some bigger Projects that have been completed at the Shed this last month



The sample



Production



Some of the Finished boxes

Kevin has made 10 stacking record boxes to the sample provided by a local gentleman. These are to hold a large collection of "45s" and I assume "EPs". The boxes are stylish, extremely well finished and all fit perfectly. A job to be proud of Kevin.



Final Touches



Pre-delivery inspection

The tool cabinet for Paengaroa Kindy has been finished. Built to their own design. There are sloping shelves with fiddles, pegboard in the doors and locks to keep the kids in.



At last, a place of their own

22 MAY 2024 • BY MARY ANNE GILLSHARE: CAMBRIDGE NEWS

Menzshed in Cambridge finally has a new home, but members are going to spend the first few months of their tenancy doing it up.

The 122-year-old Leamington Dairy Factory in Carlyle Street is a shadow of its former self with a leaking roof, rotten timber weatherboard cladding and broken windows.



Menzshed's new home in Carlyle Street.

The tagging and graffiti have made the Category C Waipā-listed building “something of an eyesore”, Waipā District Council Property Projects specialist Andrew Don told the Finance and Corporate committee last week.

But that has not put the 27-strong Cambridge Menzshed members off their stride, secretary Myles Prebble told The News.



Myles Prebble

“I was a bit like a stunned mullet when they (councillors) made the decision.”

Now all he and the rest of the Menzshed needs in the short term is “a very good donor” so they can make a start on fixing the building up.

Having a home will make it easier to attract new members but Prebble is confident they already have the skill-set to do the work needed.

“The inside has been untended for years and it’s pretty grotty. There are a few boards that need replacing as well,” plus a lick of paint should do wonders, said Prebble.

A local contractor is currently leasing the building for three months, but the building is falling into disrepair. The heavy vehicles used by the contractor are causing high wear in Lamb Street at the building’s entrance.

A roundabout will be built at the intersection of Carlyle and Lamb streets which will require a small piece of land from the corner but that would not affect the property’s utilisation.

Councillors agreed Menzshed could enter into a community lease with the council for \$430 per year and be responsible for ongoing maintenance.

Don said council had set aside \$15,500 for preventative maintenance but nearly \$40,000 was needed to fix it up. It is that balance the Menzshed would have to fund, he said.



Mike Montgomerie

Maungatautari councillor Mike Montgomerie said it was a great use of the building and supported the proposal.

Menzshed Cambridge held its inaugural annual meeting in November last year – following an article in The News which appealed for interest – is an incorporated society and has 27 signed up members with 46 other people wanting to get in.

“The concept of a Menzshed brings men together in one community space to share their skills, have a laugh, seek fellowship and work on practical tasks individually or as a group for the shed or the community,” Prebble said in his application to the council.

Some sheds have women members or have sessions catering for women who wish to get new skills.

“The Cambridge Community Menzshed is a community orientated group focussed on its members health and wellbeing and can only be an asset to our community,” said Prebble.

“We’re dependent on grants and donations for the work we have to complete on the building.”

See: [Searching for a shed](#)



Waipā District Council's property projects specialist, Andrew Don and Cambridge Community Menzshed outside the historic Leamington Dairy Factory. Photo: Supplied.

A MENZSHED MOMENT



TE AWAMUTU MENZSHED

"After joining engineering. I really appreciate my brain which is divided into two parts right-left. In right, nothing is left. In left, nothing is right."

—Unknown—

I could swear he is doing it wrong, but since I don't own a boat, I'm going to keep my opinion to myself!



Region Three News

Taranaki, Manawatu, Whanganui, Hawkes Bay and Wellington

MENZSHED MANAWATU

Menzshed Manawatu is currently undertaking a restoration of a dolls house built in the 1950's.

It was built for the owner by her grandfather in the USA.

He worked in a facility making apple boxes and used whatever materials he could access to make the house.

It has been a challenging but rewarding undertaking.

When it is painted we hope to get a picture from the owner, who has undertaken to carry out the paint job herself.

Ian and Phillip have spent many hours rebuilding it from the ground up.



Another of the ongoing projects we have underway are park benches which are constantly being produced by the production line set up to carry out the work.

They were initiated by Neighbourhood watch and are now liberally distributed around the walkways in the city. We have made numerous and it seems the more we do the more people see them, leading to requests for more of them.



The Central Energy Trust Wildbase Recovery centre is a New Zealand wildlife rehabilitation facility and visitor centre. The centre treats injured wildlife and allows the public to watch birds and other animals recovering from treatment.

The Manawatu shed has produced numerous articles such as nesting boxes and cages and also involved in other activities such as public workshops building predator traps etc.

Menzshed Manawatu has had a long relationship with the Central Energy Trust Wildbase Recovery. This is a rehabilitation facility in the Victoria Esplanade.

Palmerston North. It is specially designed to allow native animals to safely build fitness and regain strength after treatment at Wildbase Hospital.

The trust is a joint venture between the PNCC, Massey University veterinary hospital and is supported by numerous other organisations in the city.
We have produced numerous pieces of equipment for them in support of their activities.



The centre is made up of specially designed recovery aviaries, a walkthrough aviary that houses tuatara and a variety of native birds, two breeding aviaries for the endangered whio (blue duck) and pāteke (brown teal), a treatment room for wildlife care, and the interactive Powerco Education Centre.

The current project we are involved in is to provide accommodation to assist the ongoing support for the resident Tuatara.
We are building accommodation blocks to enable them to thrive until they eventually are put back in the wild.

This has been a satisfying task involving a production line set up to produce the units below. We have been invited to visit the centre in the near future and have a tour of the facilities we have helped with.





Our shed also has a young man Darren, who has developed some great skills in terms of carving etc. His latest work is carved from pink amethyst. The timber used is rimu and it is all supported with brass fittings. Wingspan tip to tip is 26cm L x 22cm H x 8cm D.



Menzshed Manawatu are also heavily involved in the local monthly Repair Café which sees the public bring articles needing repair to a session where a number of talented people are assembled to carry out minor repairs. The work is generally witnessed by the owner, and the payment is a small Koha a small Koha.

It is satisfying to see numerous items repaired and given a second life rather than end up in land-fills.





Greetings from Martinborough Mens Shed

The first 4 months of the year have been frantic for us here at Martinborough handling the normal repairs and sharpening jobs that come through the door weekly and completing the last of the external building maintenance jobs before the weather turns for the worse.

Projects of interest this quarter include;

Purchase and installation of a Public Access AED for the Martinborough Men's Shed Building. Thanks to funding from the Wairarapa Building Society and Martinborough Lions Clubs along with a generous effort by members we were able to make this happen.



Lions operate a **Book Exchange Cabinet** which was proving so popular that it needed enlarging. They approached the Mens Shed and members built and installed a new cabinet using recycled materials.



One of the more interesting repairs we have had this quarter was a copper clad foot locker that was in a pretty sorry state when bought in. With lots of elbow grease and some new linings, it was returned to it former glory.



So what's the outlook for the next quarter, well we are embarking on a project with a local charity organization to raise funds for continued native tree planting locally. They have cleared some exotics from an area to be planted and these have been milled and dried and the shed will be making chopping boards for them to sell. More on that next time.

Men's Shed Wanganui

Men's Shed creates reading nook for Whanganui Plunket Hub

[Steve Carle](#) NZ Herald - Whanganui Chronicle



Back row: Ivan Stick, Alex Gauthier, Phil Judge, Jayson Herewini, Rikki Winiata, Raewyn Winiata and Ken Rangiwananga. Front: Manaia Lomax, Marie Dickinson and Samantha Haverfield.

The Whanganui Plunket Hub was presented with a new “reading nook” on Wednesday, May 1. It was funded by the Ministry of Education and constructed by Men's Shed Wanganui. It features a beautiful Māori carving that has been hand-crafted and donated by members from the Men's Shed.

The carvers were: Rikki Winiata, Jayson Herewini and Elijah Herewini.



The completed reading nook at Whanganui Plunket.

Herewini and Winiata gave a representative speech on behalf of Plunket and welcomed the Men's Shed and Ministry of Education into the workspace.

It was a great turnout, a karakia, and a blessing were held and explained the meaning to those present as it had a lot of significance for the carving.

"Many beautiful kupu [speeches] shared and it's a great space for tamariki and whanau to have when visiting the Whanganui clinic," said Eugene Katene

"The day was filled with kupu from the Men's Shed about the work we do at Whanau Awhina Plunket and the meaning behind the wharenui. The powhiri was shared with our community services team, our clinical team, the ministry of education, the men's shed and the Katene whanau. Nga mihi nui ki a koe Katene whanau mo to korero mo matou.

“A beautiful karanga was shared from Maramapai Stark as the reading nook was unveiled. The reading nook was carved by the men’s shed in Whanganui with a beautiful meaning behind it that will be shared with our whanau and Tamariki.



The carving illustrates and embraces the Kahanga Reo philosophy of Aroha, manakitanga, and me te whanau. It is the important role of mother, father and child. The carving at the apex signifies the guardian (kaitiaki) sky father, matua kore.

“The wharenui was carved with different patterns, koru and Māori symbols representing the mahi we do at Whanau Awhina Plunket. Ranginui sits front and centre of the wharenui, he is the kaitiaki who protects and watches the tamariki that enter this space.

“The outside of the larger symbols on the wharenui represent the matua, who are the parents, and the smaller koru sitting within represent our tamariki. The symbols that face up towards the sky represent rangunui the sky father and the symbols that face down represent papatuanuku the mother of the earth.

“The ripple intertwined between our matua and tamariki represents the knowledge that our kaimahi/kaiako share with whanau every day in our mahi. This ripple flows through the wharenui to represent the knowledge that flows from the kaimahi to our whanau and tamariki.

“This whare is all about the whanau and community who are connected to Whanau Awhina Plunket and the mahi we provide and the knowledge we share to tautoko them through their parenting journey.

“Nga mihi nui ki a koe Marie Dickinson who organised this beautiful wharenui for the Whanganui clinic, it is a taonga.

“Nga mihi to our kai whakairo – Jayson Herewini, the tauira whakauiro – Elijah Herewini and the kaiwhakamamae – Riki Winiata. Your mahi is greatly appreciated from Whanau Awhina Plunket,” said Katene.

Men’s Shed Wanganui has about 50 members, generally 20 to 25 are on site at any given time, from 9am to 2.30pm Tuesdays and Thursdays. Members of the public are welcome to pop in to have a look.

Whanganui Plunket

Pēpi, tamariki and whānau are at the heart of Whānau Āwhina Plunket. The charity is Aotearoa New Zealand’s largest health and wellbeing support service for tamariki – seeing 290,000 under-5s. Over 80 per cent of newborns are enrolled with Whānau Āwhina Plunket each year.

Their nurses provide clinical assessments, and along with Kaiāwhina and Community Karitāne, support whānau and families, through home and clinic visits, as well as Plunket Line 0800 933 922, a free 24/7 telephone advice service for parents. For appointments and enquiries call 0800 184 803.

The website plunket.org.nz is one of the country’s most widely read digital child health resources, with 1.8 million visits each year. It is data-free, which means users don’t need mobile data to access it, and they can choose to view it in English or te reo Māori.

Region Four News

Canterbury and Westland



Dickey Garden Chair Repair

Jan/Feb 2024 the shed gang did a total repair of a wrought iron garden seat belonging to Grant Dickey, a member of the shed. He didn't actually do it by himself, it was done as a shed gang project.

The original seat was way passed its use by date, Wooden slat mostly rotted, cast metal ends all paint peeled and corroded. After a dismantling job, the steel ends were taken away and sand blasted. Then primed and repainted. New macrocarpa wood was sourced, machined up and fitted to the ends with new bolts. Finally, the wood was given a coat of oil/varnish.

The seat as it arrived...



Work in progress...



Completed item.just a few battens to finish fitting



Rolleston Men's Shed

Electrical Test Tags – the Shed gets them printed specifically for Rolleston Shed's electrical items, 30c a tag and with sequential numbers on the tags.

labelsandtags23@gmail.com Ph 07 392 5786



Cabinets, Chairs and Tables

The woodwork section always has a few chairs, cabinets and tables, “on the go”. Renew glued joints, revarnish, refurbish. Often these are then donated to the Salvation Army recycling shop.

Cancer Society Caravan

The engineering workshop has refurbished the small Cancer Society caravan. The support legs and notice boards have been worked on and the whole van cleaned, inside and out.



Named Knife

This could be classed as an international job if Australia isn't claimed as part of NZ. A knife with a folding blade and wooden handle, could we engrave a name on it?

It was dropped in on a Saturday morning and picked up before lunch. The advantage of the internet was all dimensions were provided as well as the requested old English font Brightos. A trial engraving on scrap wood was done for setting up and the quick part of the job was the actual engraving.

Photo board

An organisation who take pictures of people needed a board for them to stand against. When not needed the stand at the back folds away.



Halswell Menzshed

Previously I have mentioned that we were restoring the stained-glass window in the gable end of the Anglican Church on the Chatham Islands. This work is now complete – so I thought we would do a full recap.

In the July / August 2022 edition of The Shed magazine, Edwin Edmonds (one of our members) had an article, “My Shed Story so far” telling of his journey with the Halswell Menzshed. One of the Chatham Islands residents read this article and so contact was made to see if we were able to help in any way in the restoration work on their church, and particularly the stained-glass window in the end wall of the church.

Soon after, the Halswell Menzshed Shed had a visit from members of the Chatham Islands Anglican church parish building committee. Then, on 9th October 2022 the Vestry approved for us to undertake the work.

St Augustine’s Anglican Church was opened in June 1885 and has had regular services held there to the present day. Over the last 139 years the church building has weathered the Chatham’s climate well but time had taken its toll on the main church window with the stained glass falling apart and the window frame being in a poor state of repair.

Grant Taylor and Des Thomson volunteered to go over to the Chathams and remove the window and ship it back to the Halswell Shed for repair. It proved to be very easy to remove. Most of the frame just fell apart and it was quickly crated up for the journey back to Christchurch. Over the next 12 months several of the shed members were involved in the cleaning up of the old timber and where required remaking parts that had rotted beyond repair. The work included remaking a large portion of the ornate interior woodwork and panelling under the window which had been damaged by borer and water. After cleaning and disassembly of the stained-glass windows these were rebuilt back to new by the Glass Room in Christchurch. After many hours of voluntary labour by the shed the window was finally on its way back to the Chathams in February 2024. Grant Taylor was unable to help on the return visit but Roger Owers willingly took his place.

Des and Roger arrived on a Wednesday and the main window was in place and 4 side windows in the church repaired in time for a combined service on Sunday morning. The Shed team want to say a huge thankyou to Alan Harvey, Shirley Lindsay and Barby and Trevor Joyce from the Chathams for their wonderful hospitality and care for us while we were there.

Des, Grant and Roger will always remember the fun, food, scenery, people and the special unique places that we had the privilege to visit.





A MENZSHED MOMENT



THERE'S NOTHING WE CAN'T HANDLE...

Greetings to all of the MenZshed members from the Pegasus-Woodend shed with our latest news. Autumn is just about over in North Canterbury, up until about a week ago we were having some very good days but it appears winter is now upon us.

Since our last newsletter we have had a number of unusual jobs come through our doors. The one on the right is a new home for a tortoise; not for the guy in the photo, although he maybe mistaken for a tortoise. The house was designed and built from ply by John one of our shed members. I am not sure how long the tortoise will take to climb the ramp, but he or she will be rewarded to a room with a view.



The second photo is of a dog ramp also made from ply. The idea is for a small dog to walk up onto the bed or a chair, ideal for injured legs or jumping difficulties. It does need carpet or some other traction material attached to the ramp. It would be interesting to see an Alsatian try his or her luck, along with the end result. At the moment our customers wee dog is refusing to use it, it still prefers to jump up on the bed via the bedside chair. So far not a great investment for our customer.

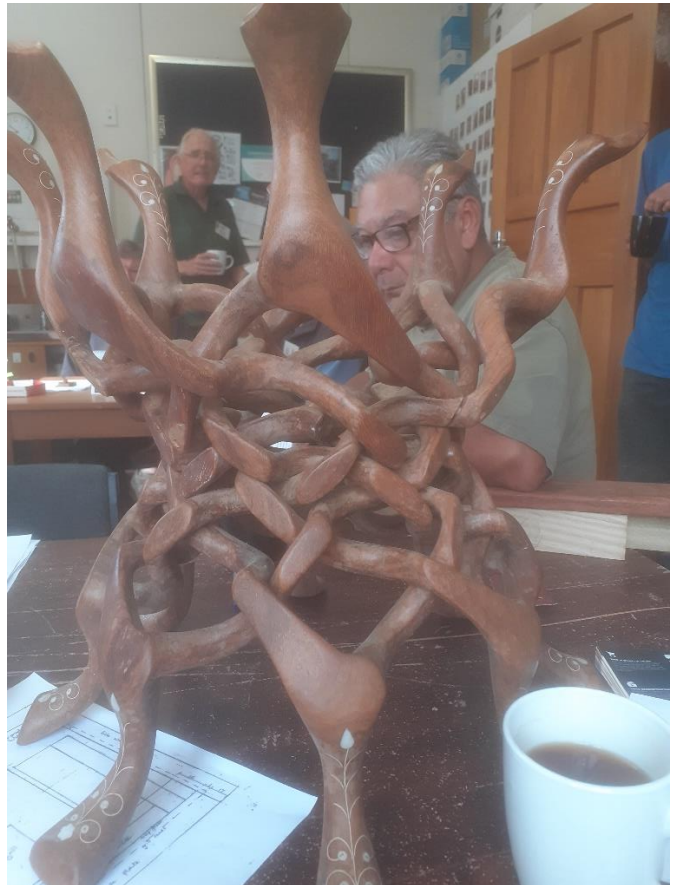


The third set of photos are of a sign we made for our local fairy forest organised by the local residents committee. This was in response to World Children's Day. We didn't make the fairy houses, although we do make them for the community. Basically the bare houses are provided for the kids and they decorate them along with the gardens any which way they want. We also had a very rewarding day attaching the houses to the trees in the forest.



All of you take care and look after yourselves
Steve Burleigh
Chairman

One is a shelf unit constructed for a local school. Another is wooden book dividers for St Martins Library. Lastly, the other is some interesting artwork possibly constructed from solid!.



The first five years

2023 marked the fifth anniversary of the Timaru Community Menzshed. After the “stop-start” Covid interruptions of the previous couple of years it was good to be able to set up some celebratory events to mark this milestone.

We had planned on sending a small contingent of members to the AGM and conference at Hastings but mother nature put paid to that. So, we resorted to what we do best in those situations and arranged a member’s BBQ to mark the date in March of the anniversary of our public meeting when the decision was made to start a shed. Later, in July, on the anniversary of the opening of our shed we held a more dignified buffet and open day for members and invited guests from the organisations and local businesses that helped us to get off the ground.

It didn’t seem right to not have any more social events involving food so we hosted the November regional hub meeting and lunch for our neighbouring sheds and then finished the year with another members’ BBQ just before Christmas. Food does play a vital role in our shed, cookies and cake at smoko with hot savouries on Saturdays. Not to mention a few beers at the “end of the month” social at our local town and country club.

In between all this eating and celebrating we did do some serious work. Repairs to furniture and equipment for the general public, interior renovations to a couple of classic caravans, building community shelves and Kindy play equipment not to mention building some serious garden furniture and large tunnel houses for a local builder’s merchant. Meanwhile, in the background, our faithful crew of kindlers were busy converting hundreds of old wooden pallets into bags and bags of kindling for sale as our mainstay fund raising activity in order to pay the bills and contribute to renewing and upgrading our facilities and equipment.

To round out the year we applied for and won a grant from the Mid and South Canterbury Community Trust. The money awarded was match funded by us and we’ve replaced our aging but indispensable forklift with a newer, more sophisticated model. A group of our members have been skill tested and awarded the “forklift driver’s certificate” and we’re all looking forward to another busy, friendly and interesting year at the Shed.



Region Five News

Otago and Southland

Invercargill

MENZSHED NATIONAL CONFERENCE AND AGM

KELVIN HOTEL, INVERCARGILL

Friday 4 April (start 1.00pm) – Sunday 6 April (finish 12.20pm) 2025

EXPRESSIONS OF INTEREST.

Close-off date: 31 August 2024

The **INVERCARGILL MENZSHED** cordially invite you to attend the 2025 National Conference being held at **Invercargill, Friday 4 April – Sunday 6 April 2025.**

The Organising Committee have a number of Sponsorship Applications before Community Funders in order to keep your attendance prices down.

To assist us with our planning and budgets, we are asking for “**EXPRESSIONS OF INTEREST**” as to whether you will be interested in attending the Conference. (Not a firm commitment as that will be by Registration Form at a later date).

The Registration Form will cover the following costs:

Morning/afternoon teas; Friday buffet meal; Lunch Saturday, Breakfast

Sunday (with Guest Speaker) and Transport from/to Invercargill Airport.

A Conference Dinner will be held at the **Bill Richardson Transport World** on the Saturday night, but this is **OPTIONAL and \$135.00 per person**. This includes a tour of this World Famous Venue including all the Ford “alphabet” model cars. Dinner and entertainment in the upstairs Conference Room. Some wine on the tables but a drinks bar operating. Spouses and partners invited.

A separate Partners (Ladies) Programme is being arranged to entertain the womenfolk during the Conference sessions.

We have booked all rooms at the Kelvin Hotel for Conference attendees and individuals will need to make such arrangements. **\$150.00 per night (double or twin singles)**

EXPRESSIONS OF INTEREST.

Personal Details:

Mrs/Ms/Mr First name:.....

Family Name:.....

Postal address: (Street, Suburb)

.....

Postal address: (City, Post Code)

.....

e-mail:

Telephone:

MenzShed Association:

Position held (circle one):*President/Vice President/Secretary/member*

Partner/spouse name (if attending)

.....

Indicative:	No attending	Cost per person	Total
Delegate early bird fee \$.....	(.....)	\$ TBA	
Delegate registration fee: \$.....	(.....)	\$ TBA	
Partners (Friday night dinner) \$.....	(.....)	\$ TBA	
Saturday Dinner (optional) \$.....	(.....)	\$135.00	
Partners (Sunday breakfast) (.....) \$.....		\$ 28.00	

REGISTRATION & CANCELLATION POLICY

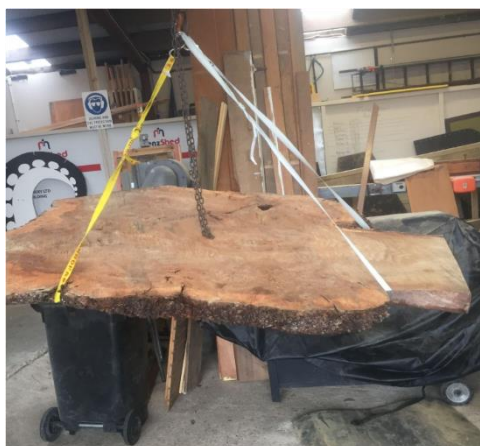
When Registration Forms available, we aim to acknowledge your Registration within 48 hours of receipt. Please ensure your email address is supplied to enable us to do that.

There is a **full refund** for all cancellations received prior to **13 March 2025**. Cancellations **after 13 March 2025 but before 20 March 2025**, receive a **50% refund**, but cancellations **after 20 March 2025** will not be refunded.

Please send your “Expression of Interest” using the following link **ONLY**:

https://docs.google.com/forms/d/e/1FAIpQLScwVCe-fdd6J1_IBuBy-s2rv3vPSTxTnuFfdRxLm8wuo9ZwZg/viewform?usp=sharing

LOCAL PHOTOS



Timber slab to be sanded/polished for use as a table.



Following the making of a Pohutakawa tree 2 years ago, we were asked by local iwi to make this large sign for Matariki this year.



Engineers complete colourful walls for Matariki

Region Six News

Tasman, Nelson and Marlborough

A MENZSHED MOMENT



SOME SHEDS RE-EDUCATE LONG FORGOTTEN SKILLS...

Paddy is in court, and after an 8 hour trial he pleads guilty.

Judge says, "Why didn't you plead guilty at first and save the court all this time?"

Paddy says, "I thought I was innocent until I heard all the evidence"

An Irishman walks into a bar in Toronto and orders a drink.

The bartender, noticing his accent, asks him "What brings you to Canada?"

The Irishman says "Well, I was in a pub in Dublin and the coaster under my glass said 'Drink Canada Dry', so I thought I'd give it a shot"

The MENZSHED NZ National AGM

The MENZSHED NZ national AGM will be held using Zoom Webinar on

Tuesday 11 June 2024 at 7:30pm.

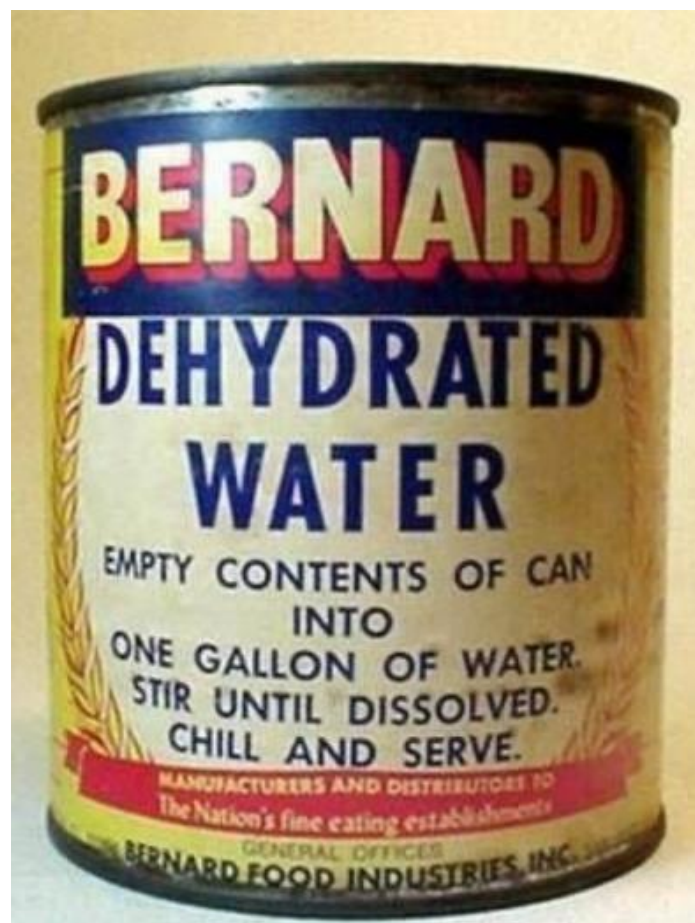
During May a draft agenda and nomination forms will be distributed to member sheds.

During June, familiarisation sessions will be held with the webinar application.

Inquiries? Please contact Roger Bowman, Secretary, secretary@menzshed.nz

"After joining engineering. I really appreciate my brain which is divided into two parts right-left. In right, nothing is left. In left, nothing is right."

—Unknown—



Next Newsletter – August 2024

The next newsletter is due for publication at the end of August 2024. The deadline for articles for that newsletter is **Friday 23th August 2024**. When you have completed an interesting project or done something of interest with others down at the shed, send us an article. Don't wait for the deadline as it gives the editor time to arrange articles. It is always good to see pictures with an article. **Format for article please use Word and Jpeg for pictures as these are easy to work with. Please limited article to around 200 words.**

Please do not send your newsletter as I will only publish articles sent.

Send articles to **support@menzshed.nz** Cheers Garry Bryant Support Services and Editor



A reminder to Facebookers that we have a shedder group called the MENZSHED NZ shed forum at <https://www.facebook.com/groups/917022518450093> Presently 48 sheds are represented by 244 shedders. To participate, visit the site and answer the two screening questions. After your application is accepted, you will be able to read and post to the site.

Sponsors and Discount Benefits

Visit our web site to find out more about each company and the benefits they provide to member sheds. www.menzshed.org.nz/membership/benefits/



WORKSPACE LED LIGHTING